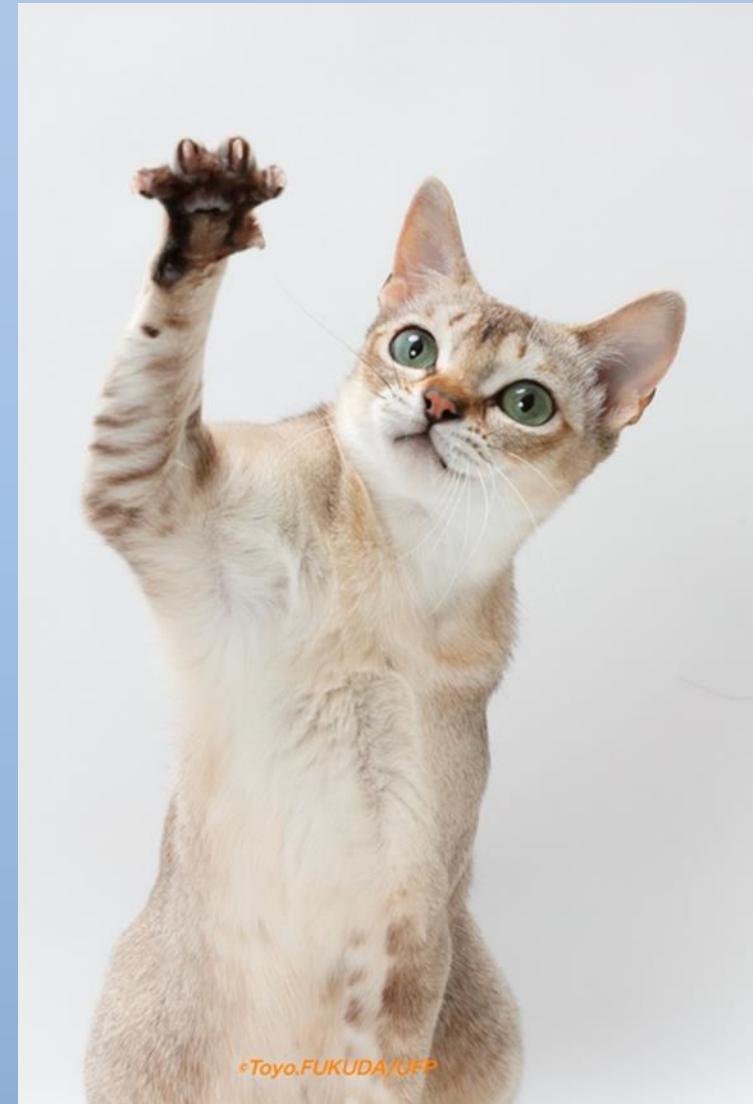




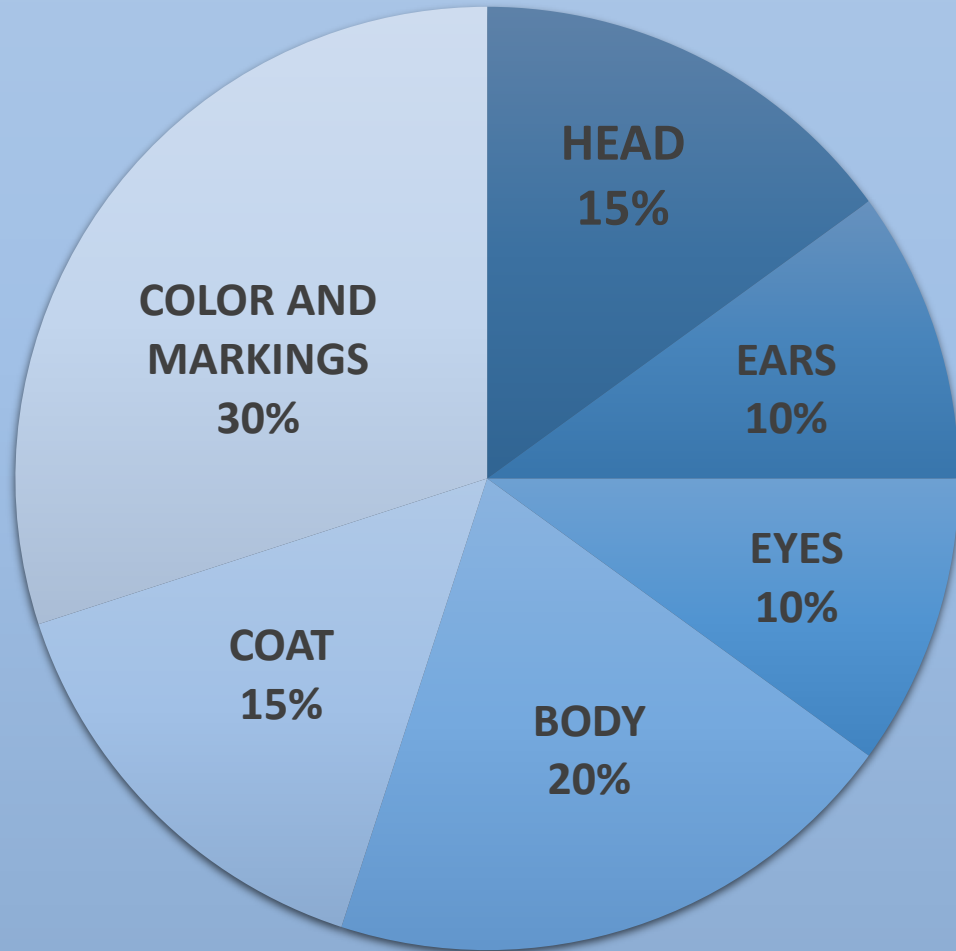
Singapura

ESSENCE OF SINGAPURA

- small to medium sized
- large eyes and ears
- delicate coloring.



POINT BREAKOUT



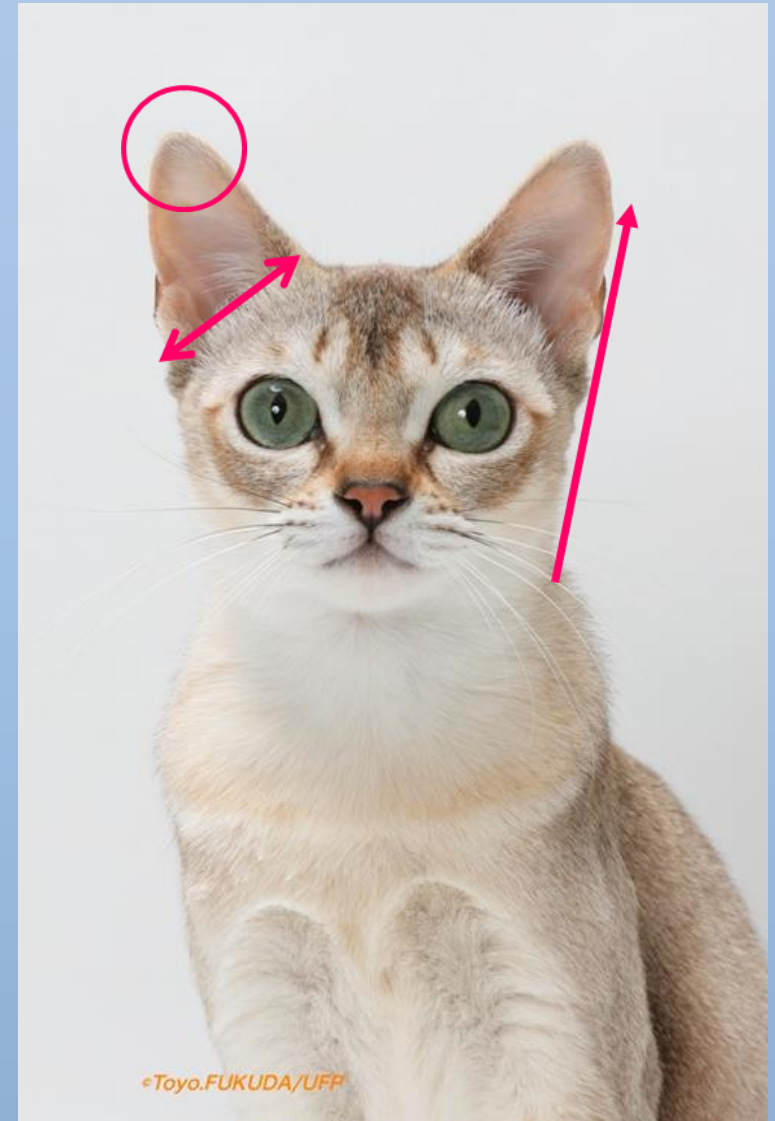
HEAD

- rounded
- whisker break
- broad muzzle
- blunt nose
- Chin well developed



EARS

- large, slightly pointed wide open at the base, a deep cup.
- Medium set.
- Outer lines of the ear extend upward at an angle slightly wide of parallel.



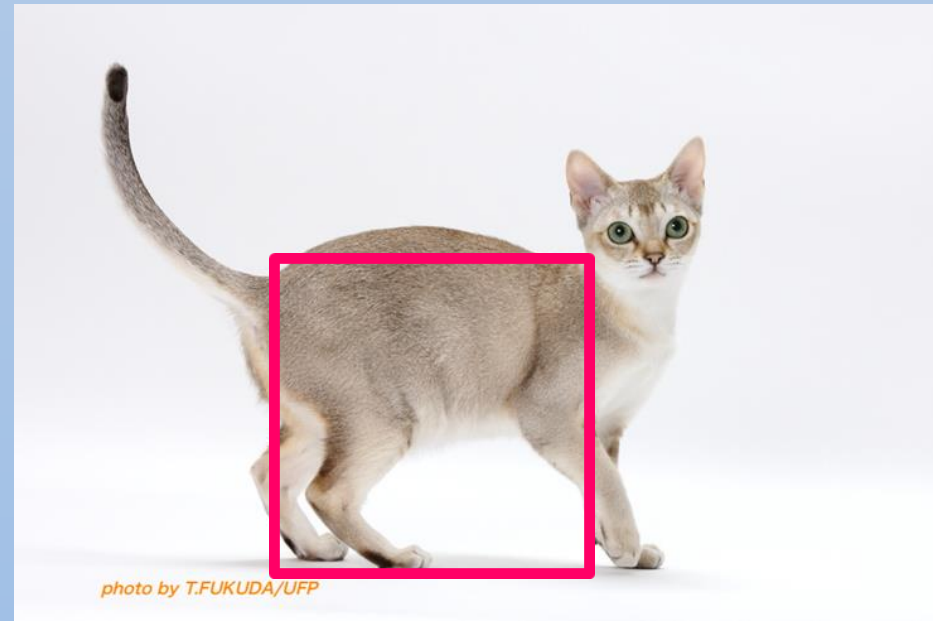
EYES

- Large, almond shaped with slant
- Neither protruding nor recessed.
- Eyes set not less than an eye width apart.
- Color hazel, green or yellow



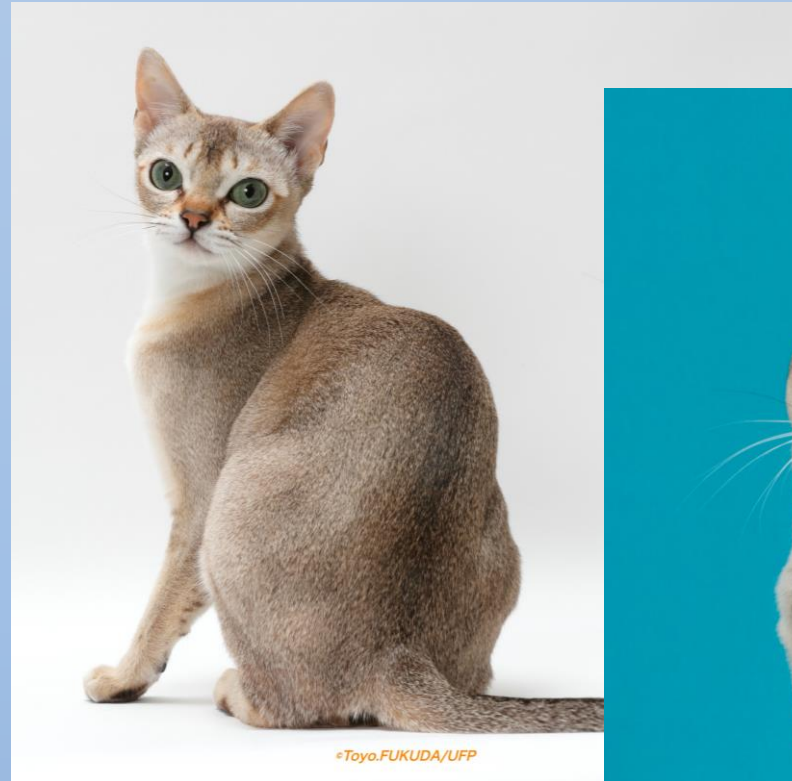
BODY

- Small to medium sized
- Moderately stocky muscular body.
- Legs and floor form a square.



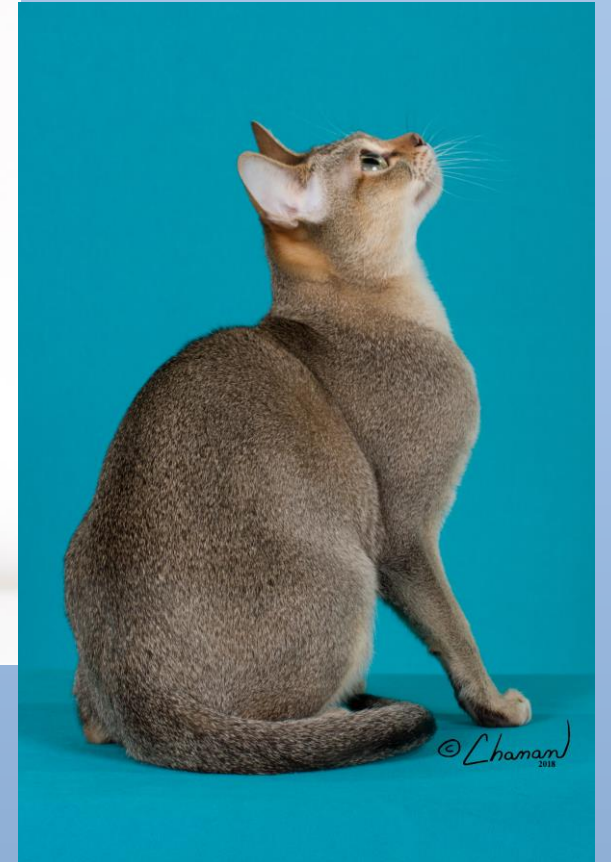
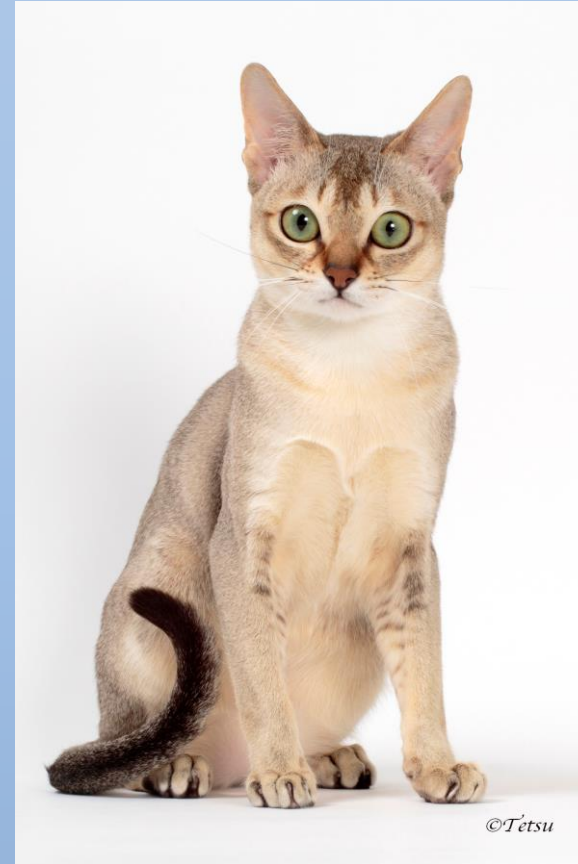
COAT

- Very short
- Silky texture.
- Close lying
- Springy coat a fault.



COLOR & MARKINGS

- SEPIA AGOUTI
- Muzzle, chin, chest and underside color of unbleached muslin.
- some barring on inner front legs and back of knee only.
- Facial markings of dark lines extending from brows and outside corner of eyes.



Penalize

- Coldness or gray tones in coat.
- Gray undercoat, next to the skin.
- Barring on outer front legs.
- Necklaces
- Non-visible tail faults
- Lack of nose liner.

Disqualify

- White spotting.
- Barring on tail.
- Top of head unticked.
- Unbroken necklaces or leg bracelets.
- Small eyes
- Small ears.
- Visible tail faults.
- Blue eyes.
- Any color but sepia agouti.

SINGAPURA

