

Selkirk Rex



A Brief History...

- Miss DePesto of NoFace (Pest) was born in a litter of six
- She was the only kitten with a strange coat
- Her mother was a stray that was living in an animal shelter in Sheridan, Montana
- At a young age, she went to live with Jeri Newman
- She was not the most attractive of cats so Jeri created a standard not based on the original cat



Pest at the age of 3 years

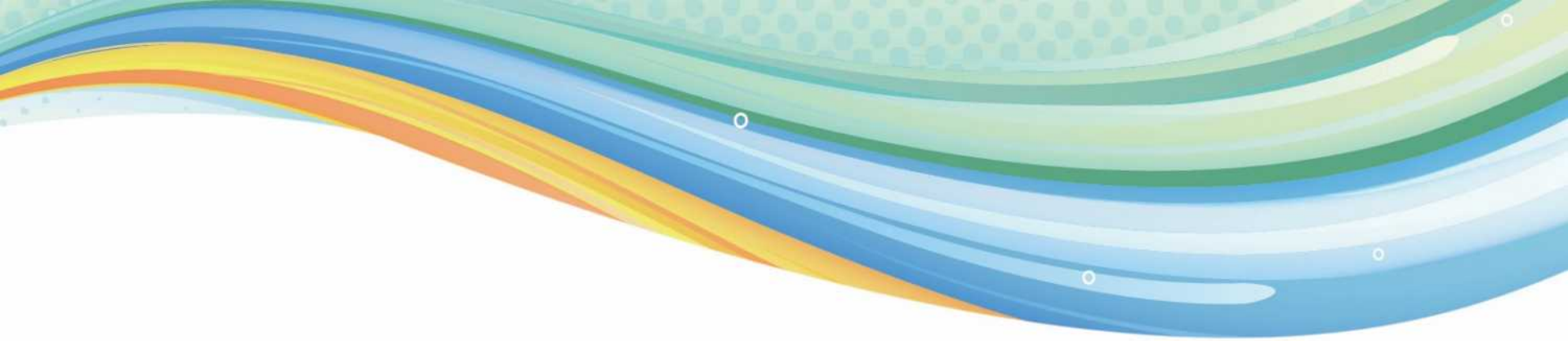


- At the age of 10 months Pest was bred to Ch Photo Finish of Deekay, a Persian Jeri had been using for her Persian breeding program.

- In that first litter was a longhair (proving that Pest carried longhair) and a straighthair.



Photofinish of Deekay



- In her first litter was also a black and white curly cat - proving that the curl was dominant - he was named NoFace Oscar Kowalski.
- Oscar is the start of the line that occurs in almost all Selkirks.



- The following year, Pest was bred to her son, Oscar, and in that litter was a cream point, proving that Pest carried pointed colors and dilute.
- Because of the many colors available with outcrosses and with Pest herself, all colors/patterns are allowed in Selkirks



Oscar and son, a cream point male

• In her next litter, again bred to Oscar, were three kittens that turned out to be homozygous - which means they do not carry the straighthair gene and will only produce curly kittens -proving that this curly gene was a complete dominant and the first complete dominant coat-modification gene in CFA.



Effective May 1992, Selkirk Rex
were accepted for Registration status
(and showing in Miscellaneous status)
in CFA

Effective May 1998, Selkirk Rex
were advanced to Provisional Status
in CFA

Effective May, 2000, Selkirks were
advanced to Championship Status.
Grand Champion, Breed Winner,
Pamacs Winnie The Blue became the
first Selkirk Rex to Grand, on July
30, 2000



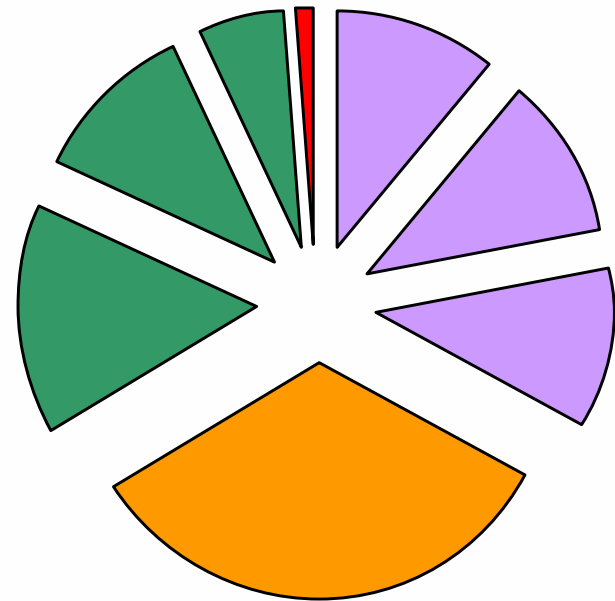
General

- The Selkirk Rex is a medium to large cat with heavy boning which gives the cat surprising weight and an impression of power.
- They are an active cat with a sweet and endearing personality.



Point Allocation

- **Head** **33**
 - Skull 11
 - Chin and Muzzle 11
 - Ears and Eyes 11
- **Body** **33**
 - Torso 15
 - Legs and Feet 13
 - Tail 5
- **Coat** **33**
 - Texture, Curl and Density
- **Color** **1**
 - Including Eye Color



The overall balance is more important than any one feature.

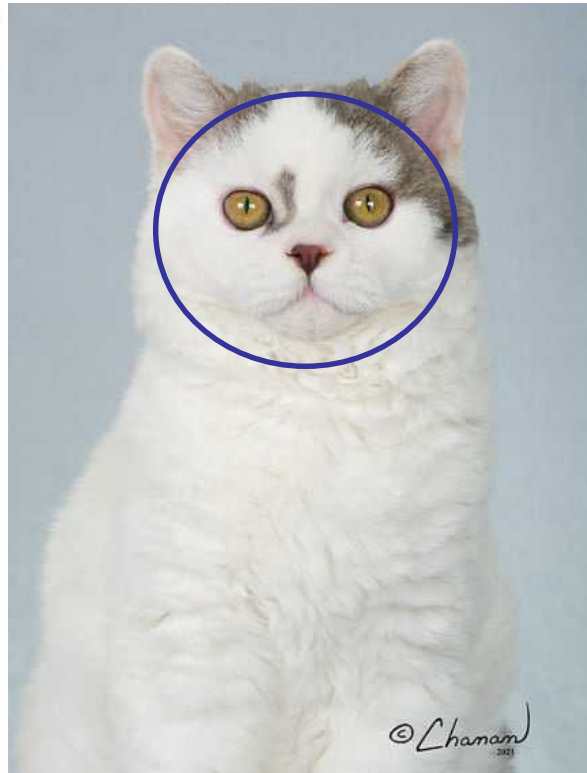
Head ~ 33 Points

Skull: 11 points

- Round
- Broad
- Full-cheeked in both males and females
- Round underlying bone structure with no flat planes



The overall impression should be round, rather than oval.
The head should be smooth in all directions





- Skull should be rounded in all directions
 - Front to back
 - Side to side
- No indentation above the eyebrow ridge leading to the rounded top head
- Forehead should not flatten between eyebrows and top head

- When feeling the skull for the profile, there should be a smooth flow from the stop at eye level to the top of the head between the ears.

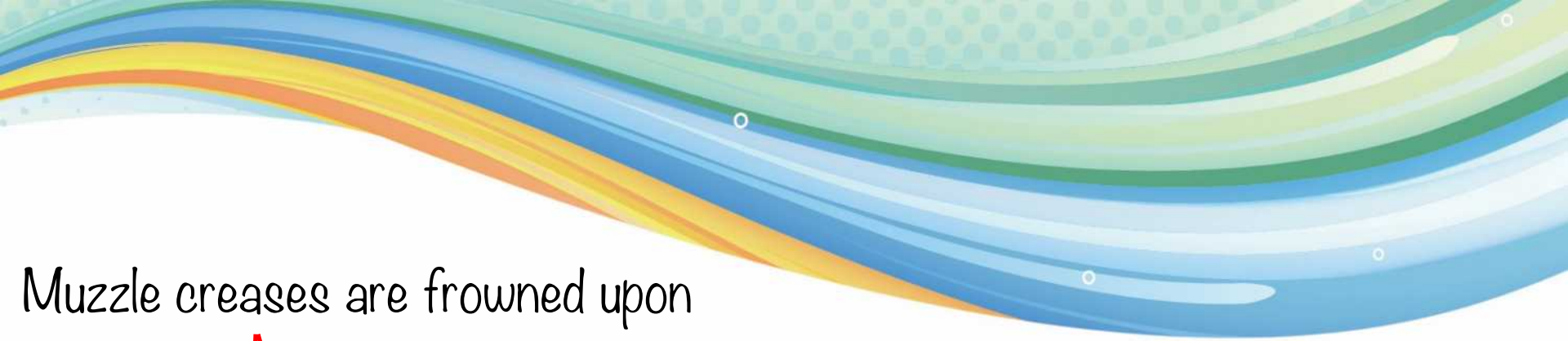


- A flat forehead may feel smooth but disrupts the smooth look of the top head.

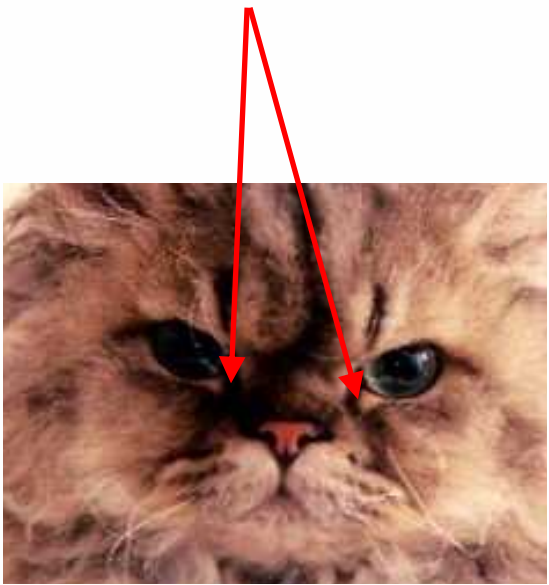


Muzzle and Chin – 11 points

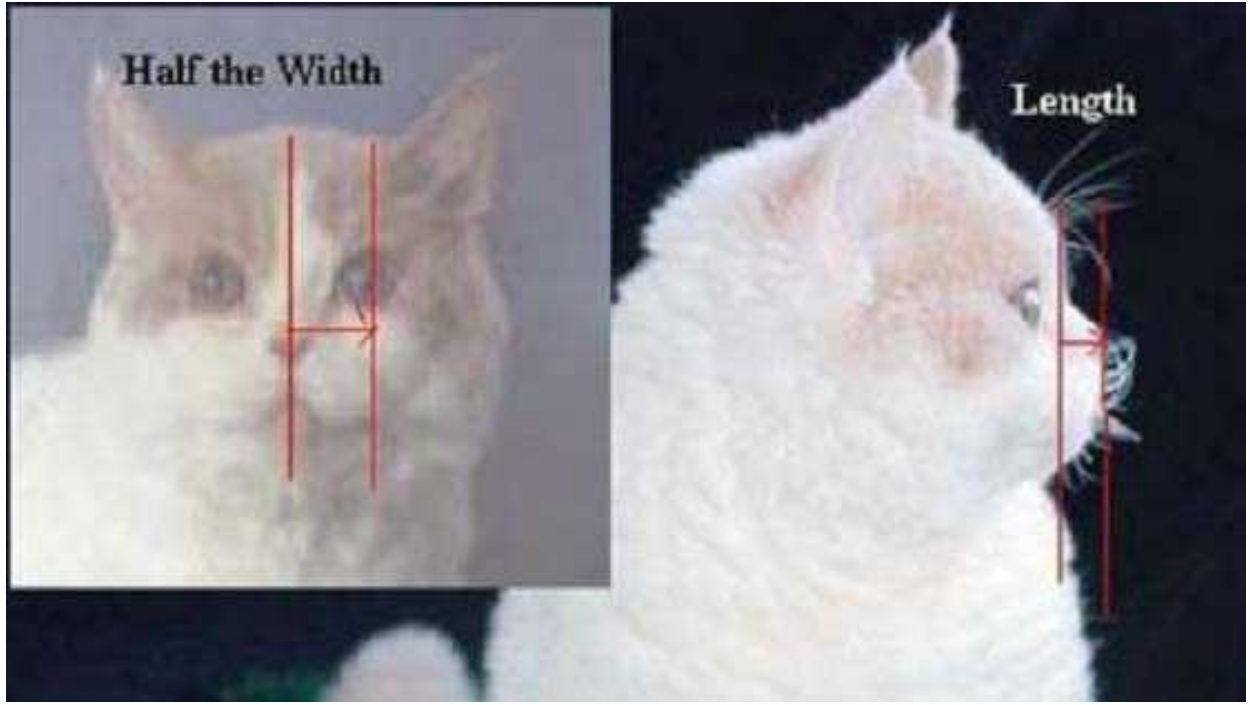
- Muzzle is medium width
- Underlying bone structure is rounded
- Well-padded whiskers pads give impression of squareness
- Length is equal to $\frac{1}{2}$ the width.
- Muzzle clearly visible beyond the curve of the cheek
- Tip of chin lines up with tip of nose and upper lip in same vertical plane
- Nose stop
- Nose has downward slant with convex curve and set below eye line
- Chin is firm and well-developed
- Balanced in proportion to rest of head



Muzzle creases are frowned upon



Muzzle length is half the width



Ears and Eyes - 11 points



Ears

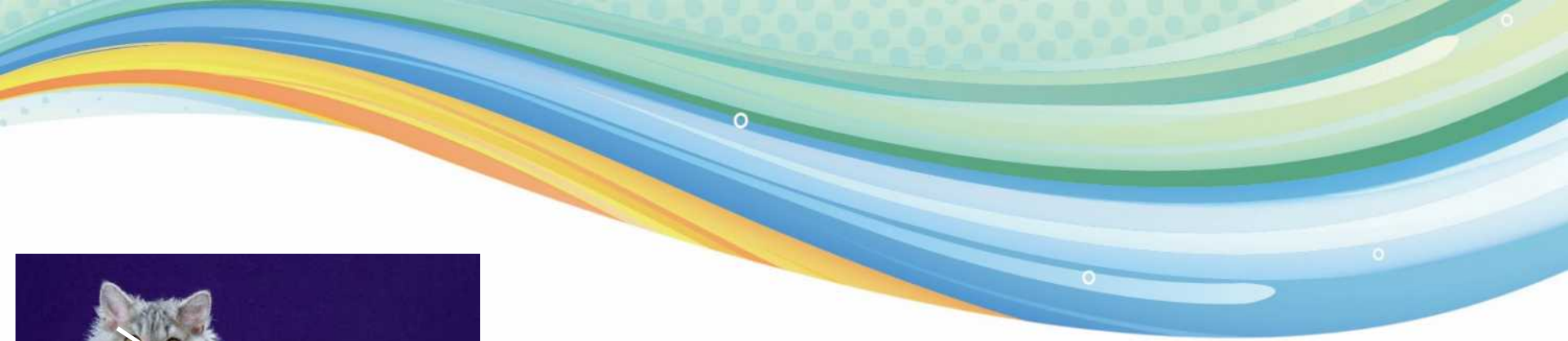
- Medium in size
- Broad at base
- Tapering
- Set well apart

Eyes

- Large
- Rounded
- Set well apart
- Should not appear almond or oval-shaped

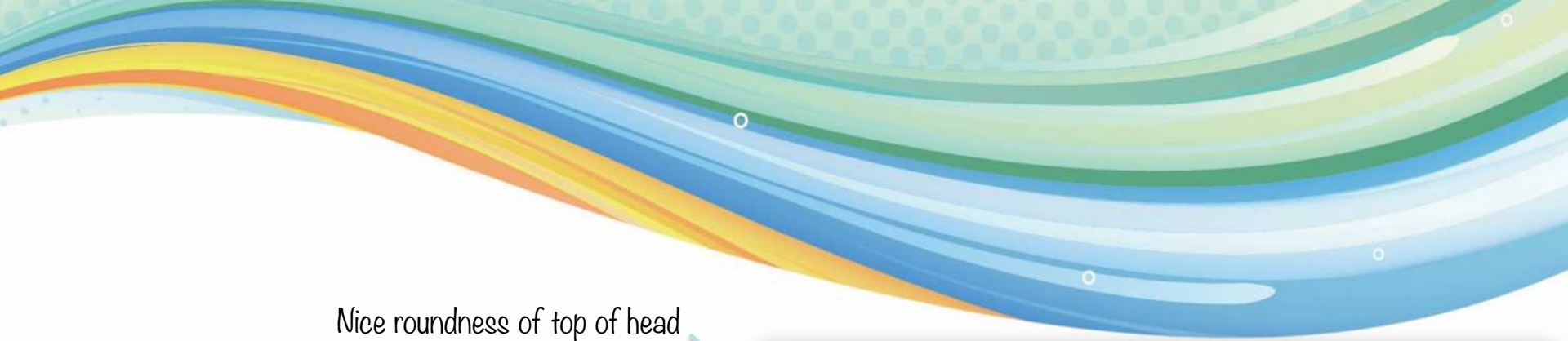
- Ears - Should fit into, without distorting, the rounded contour of the head
- Ears - Furnishings, if present, are curly.





Round eyes, outside corner of eyes set slightly higher than inner corner.

Example of eyes that are not round.



Nice roundness of top of head

Good profile

Excellent convex curve to the nose and good nose length.
It must not resemble a Persian nose and the curve separates it from a British Shorthair nose.

Nice cheek roundness

Roundness of the skull continues over the top to neck



Round, broad and full-cheeked in both males and females.
The underlying bone structure is round, with no flat planes

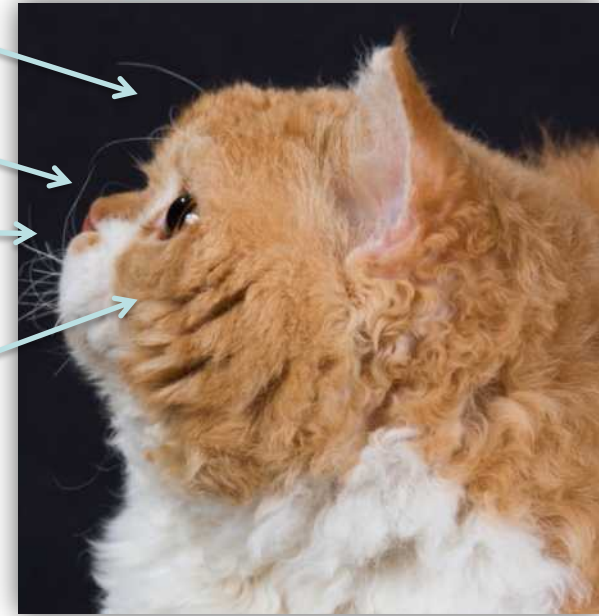
Check the roundness of the skull from back to front and between the ears.

Nice top of head.

The nose should curve downwards a bit more and not be straight. It should start below the eye line.

It must not resemble a Persian nose and a convex curve separates it from a British Shorthair nose.

Nice cheek roundness



Better nose and forehead but needs more chin



- **The nose** has a downward slant with a **convex curve** and is set below the eye line with a gentle stop. In profile, there is a slight indentation in the nose, but not a definite break
- **CHEEKS:** Broad, full and well rounded.
- **JAWS:** Medium width; the length being equal to half the width. The underlying bone structure is rounded with well-padded whisker pads to give the impression of squareness. **The profile** shows a short muzzle, clearly visible beyond the curve of the cheek.

Ears furnished with good width
between them.

Round eyes; set horizontal
with a slight bias towards
the ears



(This Selkirk is sitting slightly on an angle)

Full round
face

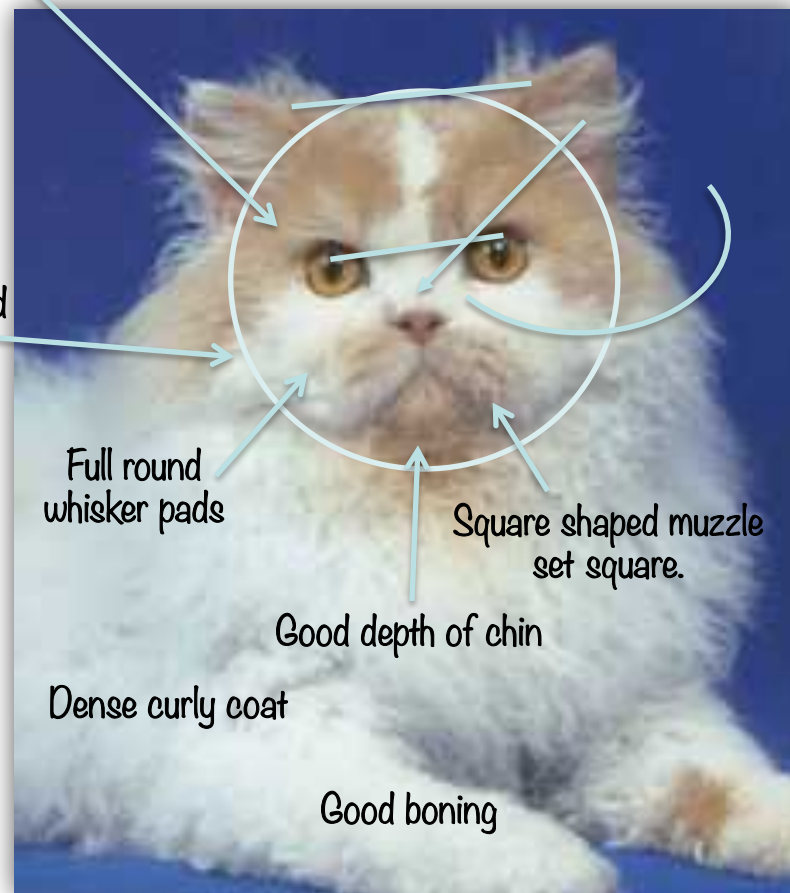
Full round
whisker pads

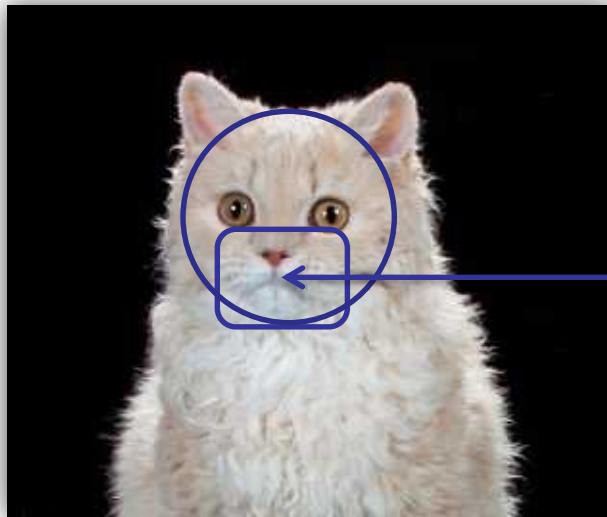
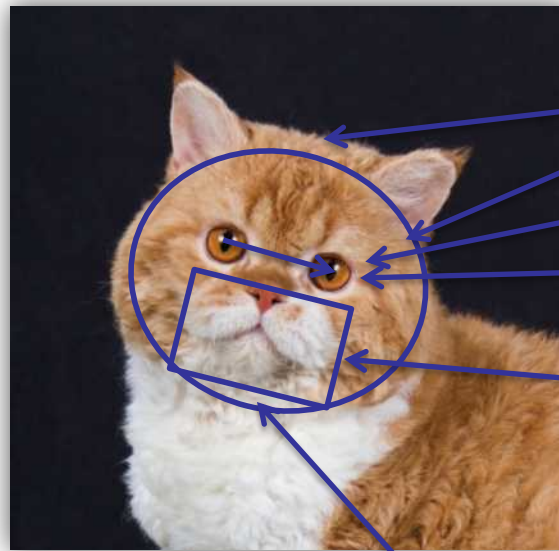
Square shaped muzzle
set square.

Good depth of chin

Dense curly coat

Good boning





- Good width between ears
- Round, full face
- Big Round eyes
- Eye set horizontal when viewed from the front
- Prominent squared muzzle with full well-padded round whisker pads (*you can also imagine a circle around the muzzle from eye level to chin*).
- Chin is firm with good depth
- Distance from top of nose leather to top lip about the same as the distance from the lip to the bottom of the chin.

Eyes set well apart with at least an eye's width between them.

JAWS: Medium width; the length being equal to half the width. The underlying bone structure is rounded with well-padded whisker pads to give the impression of squareness



Good head type

- Round head
- Round eyes
- Medium-size ears
- Distinct muzzle
- Strong chin
- Square-appearing muzzle
- Good width between eyes

Profile

- Round top head
- Muzzle visible beyond curve of cheek
- Tip of chin in line with upper lip and tip of nose
- Nose stop
- Downward slant with convex curve to nose
- Nose set below eye line



Body ~ 33 Points

Torso – 15 points

- Medium to large
- Well balanced
- More rectangular than square but not long
- Back is straight with slight rise to hindquarters
- Shoulders and hips should appear to be the same width





Medium to large cat with heavy boning and an impression of power.

Torso – medium to large and well balanced. The substantial muscular torso is more rectangular than square. Females are less massive than males.



Legs and Feet – 13 points

- Legs: medium to long. Substantial boning
- Feet: Large, round and firm
- Toes: five in front, four behind



Tail – 5 points

- Medium length
- Proportionate to body
- Heavy at base
- Neither blunt nor pointed at tip





Good body type

- Balanced
- Medium to large
- More rectangular than square
- Legs medium to long, substantial boning
- Tail proportionate to body

Coat ~ 33 Points

Coat length: Shorthair

- Obvious differences seen on tail and ruff
- On shorthairs, tail hair and ruff same length (1-2") as the coat
- On shorthairs, tail hair is plush and lies compactly around the tail



Shorthair Curl

Random, unstructured coat

Arranged in loose, individual curls

Curls appear to be in “clumps” rather than as an all-over wave.

Curl varies by length, sex and age, but entire coat should show effect of rex gene

Curl more evident around neck, on the tail and on the belly

Allowance should be made for less curl on younger adults and kittens





Shorthair Coat Density

- Dense
- Full
- No bald or thinly covered areas
- Coat stands out from the body
- Should not appear flat or close-lying

Shorthair Coat Texture

- Soft
- Full
- Obviously curly
- Plushy



Coat length: Longhair

- Obvious differences seen on tail and ruff
- Longhairs should exhibit some ruff and some plumage of tail, can be variations of fullness.
- On longhairs, tail curls are plummy and stand out away from the tail



Longhair Coat Texture

- Soft
- Full
- Obviously curly
- Does not appear as plush as shorthair but should not appear thin



Longhair Coat Density

- Dense
- Full
- No bald or thinly covered areas
- Coat may stand out from the body but may appear and feel less than plush but is not close-lying



The Longhair Curl

- Random, unstructured coat
- Arranged in loose, individual curls
- Curls appear to be in “clumps” or “ringlets” rather than as an all-over wave.
- Curl varies by length, sex and age, but entire coat should show effect of rex gene
- Curl more evident around neck, on the tail and on the belly
- Allowance should be made for less curl on younger adults and kittens



Color ~ 1 Point

- Color includes Eye Color
- Any genetically possible color or combination of colors is allowed
- Any eye color is acceptable





Handling

- Selkirks prefer to have all feet on the table
- Because they are a big cat, they do not like to be held in the air or at arms length – need to be supported
- Coat should be felt by running fingers through the coat
- Coat should NOT be felt by running hands down the back – the coat will flatten out and lose curl
- To check belly fur, front end can be raised up
- Some males are sensitive to having back continually stroked
- Selkirks are gentle, affectionate cats, but can be alarmed by strange noises/places
- They would rather hide than fight, but will react quickly if frightened

Handling: Good Examples



Handling: What to Avoid





Penalize & Disqualify

PENALIZE

Excessive cobbiness
Sleek Oriental appearance

DISQUALIFY

Extreme nose break
Lack of visible muzzle
Malocclusion
Tail kinks
Crossed eyes
Obvious physical deformities
including polydactyl feet
No evidence of curl

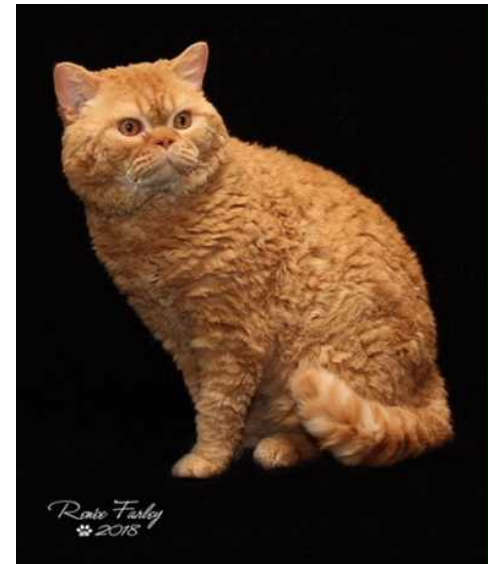
History Makers

GC, BW Highlandkatz Twisted Sister, DM



First Grand of Distinction

GCD, RW Highlandkatz Rosa Sequoia Twist



Second Grand of Distinction

GCD, BW RW Truebrit Highlander of Timberpaws

History Makers



GC, BW, NW Dramatails Wall-E
of Spellbinding
19th Best Cat, 2009-2010



GC, BW, NW Truebrit Mississippi Blues
11th Best Cat, 2013-2014



GC, BWC, NW Truecurls Mississippi
of Cat Forest
18th Best Cat China, 2017-2018

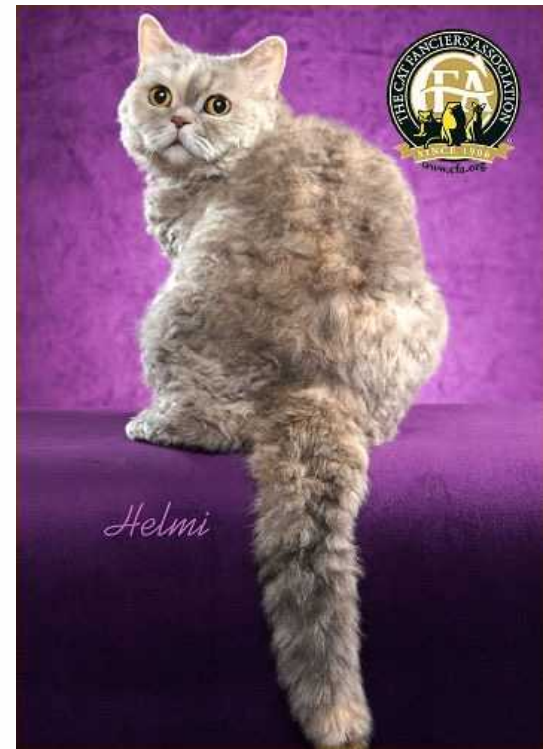
History Makers



GC, NW Highlandkatz Dynamite
24th Best Cat China, 2017-2018



GC, NW Highlandkatz Ottopilot
15th Best Kitten, 2017-2018



GP, NW Silencedryad Lillian
of Big Ben
25th Best Alter, 2017-2018

History Makers



GC, BWR, NW
Highlandkatz
Beyonce of Kittrik
20th Best Kitten,
2018-2019



GC, NW Highlandkatz
Sistersledg
of Kittrik
20th Best Kitten,
2019-2020

GC, GP, NW Truebrit
Chance Encounter
3rd Best Alter,
2018-2019



GC, BWR, NW, AW
Highlandkatz Super
Trooper
5th Best Cat,
2019-2020





Credits

Editor: Laura Barber

Production: Believe Creations, Bethany Colilla

Thank you to all the Selkirk Rex breeders for their contributions.