



ORIENTAL

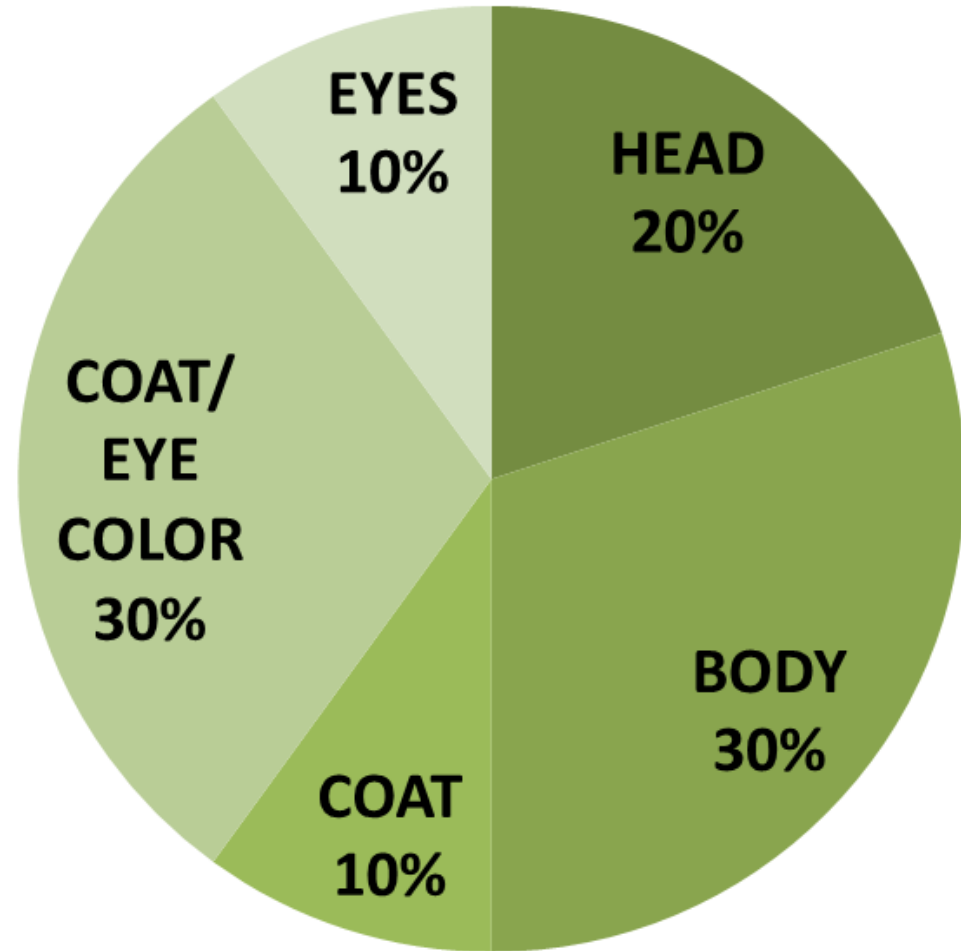
SHORTHAIR AND LONGHAIR

THE ORIENTAL IS THE EPITOME OF ELEGANCE

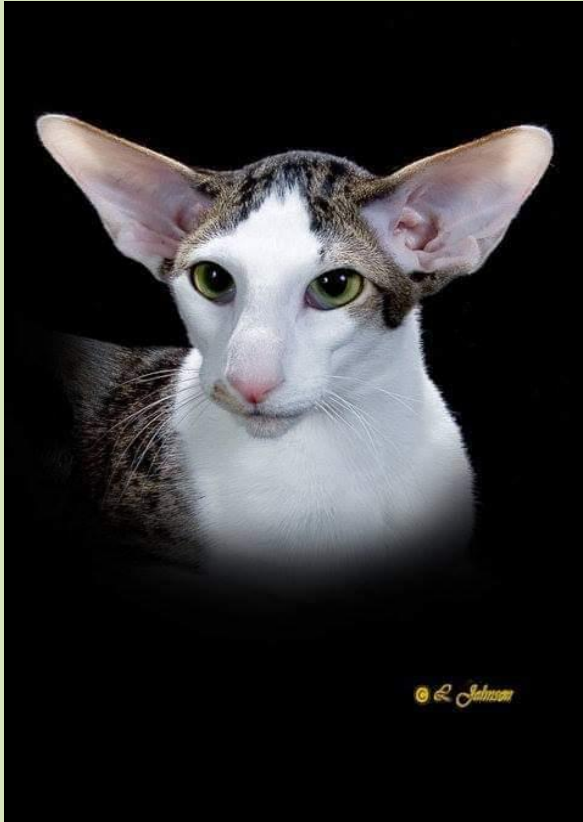


POINT BREAKOUT

- HEAD – 20
- BODY – 30
- COAT – 10
- EYES (Shape, Placement, Size) – 10
- COAT COLOR – 20
- EYE COLOR- 10



HEAD



- Long, tapering wedge
- Wedge starts at nose and flares in straight line to tips of ears without break
- Profile is flat, a long straight line from top of head to tip of nose (no dip, no bulge)
- Nose long and straight, continuing forehead
- Muzzle is fine, wedge-shaped



HEAD (continued)

- **EARS:**

Large, pointed, wide at base

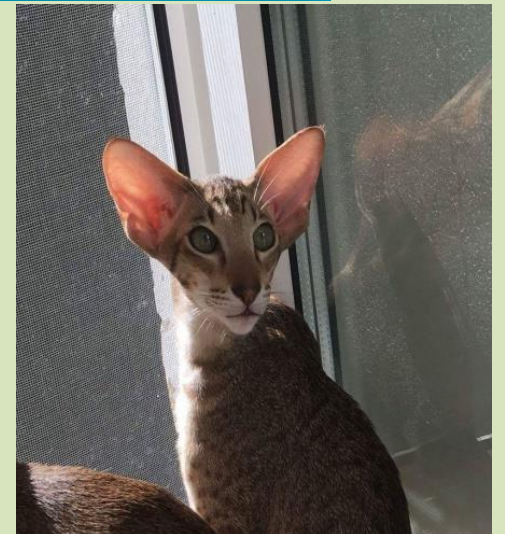
Continuing the line of the wedge

- **EYES:**

Almond shaped, medium size

Slanted toward the nose in
harmony with the lines of the
wedge and ears

Uncrossed



BODY

- Long, svelte
- Fine bones and firm muscles
- Shoulders and hips continue the sleek lines of a tubular body
- Neck long and slender
- Legs long and slim, in proportion to body
- Paws dainty, small and oval
- Tail long, thin at base and tapered to a fine point



COAT



<< LONGHAIR:
Medium length, fine,
silky
Lies close to body
Hair is longest on the
tail



^^ SHORTHAIR:
Short, fine textured
Glossy or satin-like
Lying close to body

COLOR & PATTERN

COLOR IS THE ORIENTAL'S REASON FOR BEING!

(over 600 colors and patterns)

SOLID

SHADED

SMOKE

PARTI-COLOR

BI-COLOR

TABBY (classic, mackerel, spotted, ticked)

POINTED



COLOR & PATTERN (continued)

EYE COLOR:

White and Bi-Color: blue, green or odd-eyed

Pointed, Pointed & White: Blue

All Others: Green



(photo is courtesy of Malgosia Fijalkowska)

PENALIZE & DISQUALIFY

Penalize:

- Crossed Eyes
- Incorrect eye color
- Palpable and/or visible protrusion of the cartilage at the end of the sternum

Disqualify:

Seal point, seal smoke point, chocolate point, chocolate smoke point, blue point, blue smoke point, lilac point, lilac smoke point

Disqualify (continued):

- Any evidence of illness or poor health
- Weak hind legs
- Mouth breathing due to nasal obstruction or poor occlusion
- Emaciation
- Visible kink in tail
- Miniaturization
- Lockets and buttons
- LH: definite double coat

ORIENTALS



Oriental cats have brought together the beauty, style, and elegance of the Siamese with the rainbow of colors of our beautiful American Shorthair cats. There are only a few of the over 600 color and pattern combinations shown here. As the breed evolves, we may see even more exotic colors or patterns.

(Photo on left courtesy of Malgosia Fijalkowska, Abla-Gato Cattery. Photo on right courtesy of Linda Ahrens, Kat-Attack Cattery)