

Lykoi

The werewolf cat

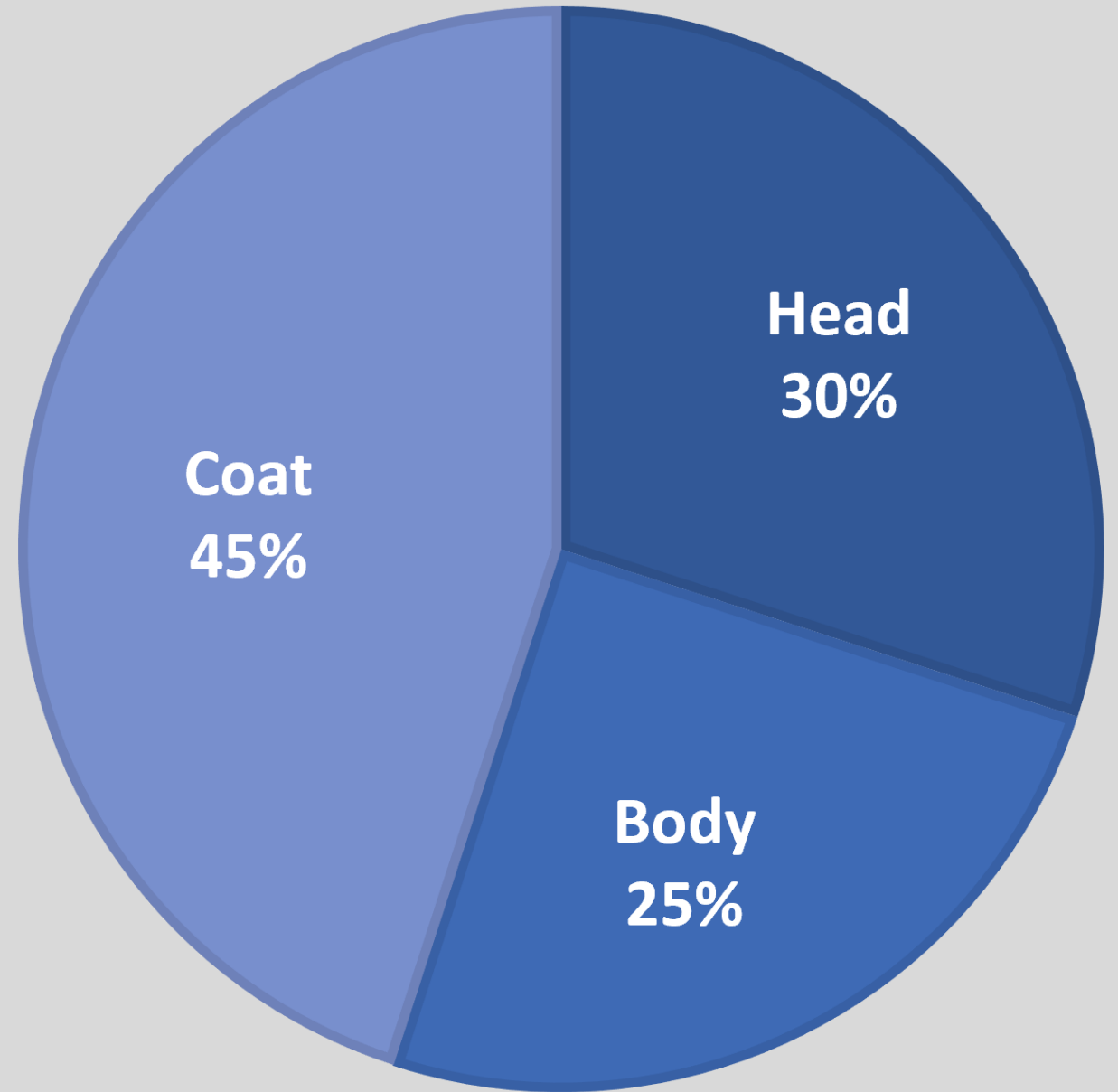


About the Lykoi

- Name Greek for “wolf”
- Derived from a naturally occurring recessive mutation in feral cats
- 3 distinct traits
 - Lack of undercoat
 - Sparse guard hair on legs, feet, and face mask
 - Roaning; amelanistic color pattern of white and color

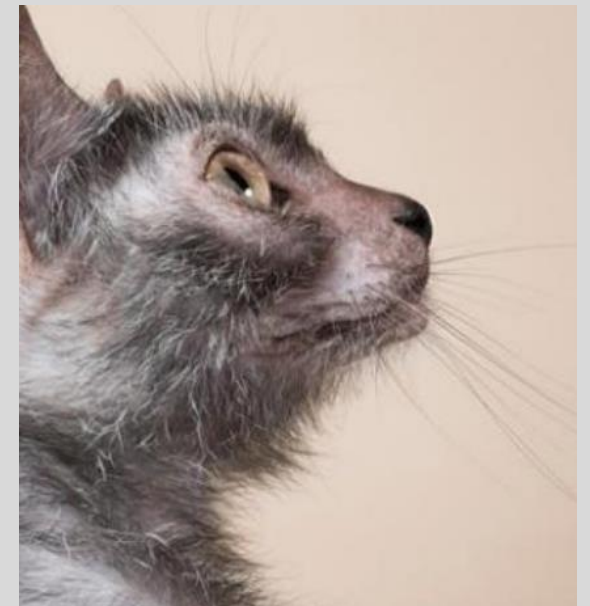


Breakout of Points



Head

- Medium muzzle
- Rounded, hairless whisker pads with whisker break
- Well-developed chin
- Head modified wedge with round contour from nose to cheek to ears
- Head longer than wide
- Ears tall, open at base, rounded tips and set high
- Ears vertical and erect
- Eyes walnut shape, slanting upward



Body

- Conformation medium, between slightly slendered, semi-foreign, and elegance
- Proportion and large balance for males
- Neck medium in length, neither thin nor muscular
- Legs and feet sparsely haired, medium length/boning
- Tail shorter than body, tapers to point



Coat

- Undercoat lacking over entire body
- Hairless face mask connecting nose, muzzle, eyes, and ears
- Guard hairs cover body, but sparse or lacking on legs, feet, back of ears, and face mask
- Guard hairs short to medium length, soft and silky to touch
- **Allow:** stud jowls in males, eyes smaller in proportion to head for cats less than 8 months, pigmentation spots, degree of guard hair varies
- **Penalize:** less than 30% body covered in guard hairs



Lykoi Colors

- All colors and patterns
- Acceptable colored hair percentage: 30-70%, 50% ideal
- Roan pattern varies depending on color
- Each hair colored or white from root to tip
- Lockets, buttons, belly spots allowed



Disqualifiers

- Evidence of illness/poor health
- Visible tail kink
- Aggressive behavior endangering the judge



Lykoi Summary

- Naturally occurring breed with mutation
- No undercoat, partially hairless breed
- Coat soft to touch but appears rough

