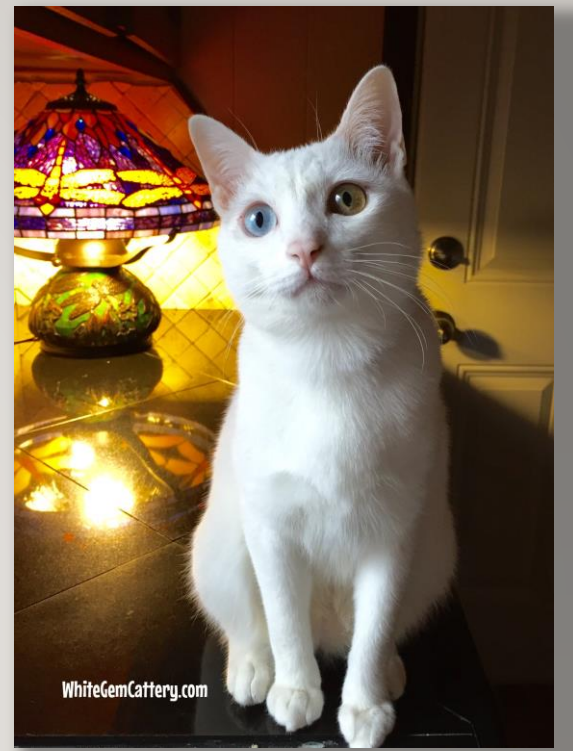




KHAO MANEE



AN ANCIENT
NATURAL BREED
ORIGINATING FROM THAILAND

KHAO MANEE



- Native breed of cat still seen in Thailand today
- Built for hot weather / lithe, not extreme body
- Muscular and athletic, but never a bulky body
- Males 8 to 11 pounds, heavier boning
- Females 6 to 8 pounds
- Medium length nose / short, smooth coat



KHAO MANEE

BY THE NUMBERS

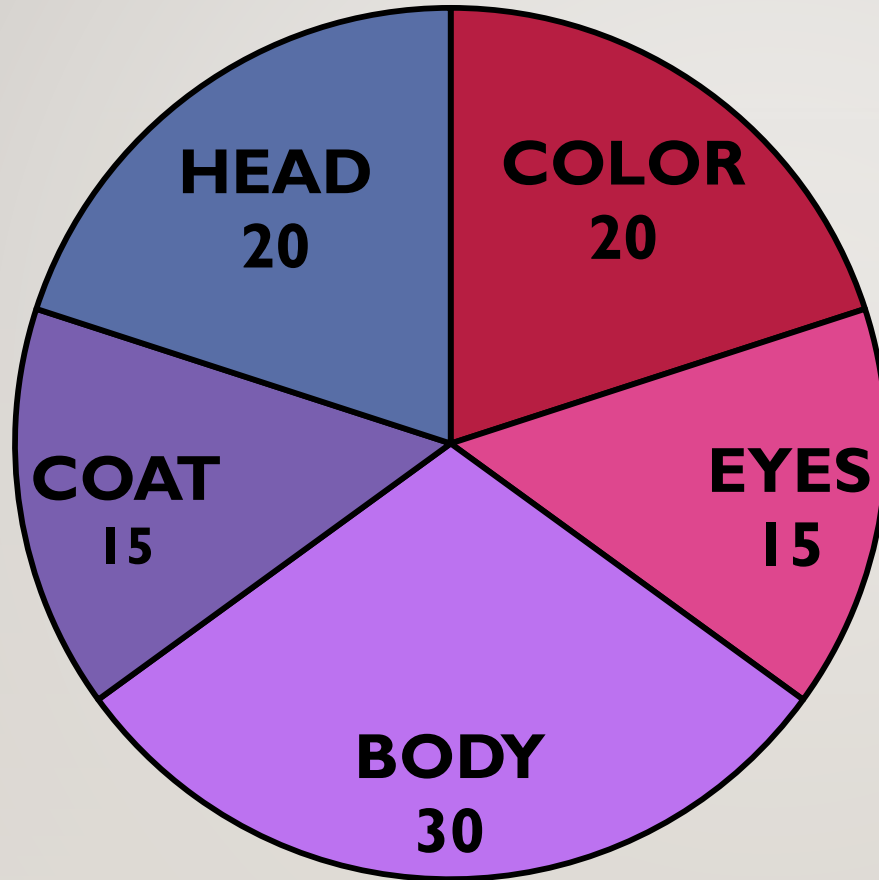


In 2016, there were 47 Khao Manee registered in TICA.

Since 2008, a total of 300 Khao Manee have been registered in TICA.



KHAO MANEE



POINT SCORE

Head	20
Eyes	15
Body	30
Coat	15
Color	20

KHAO MANEE

BREED STANDARD

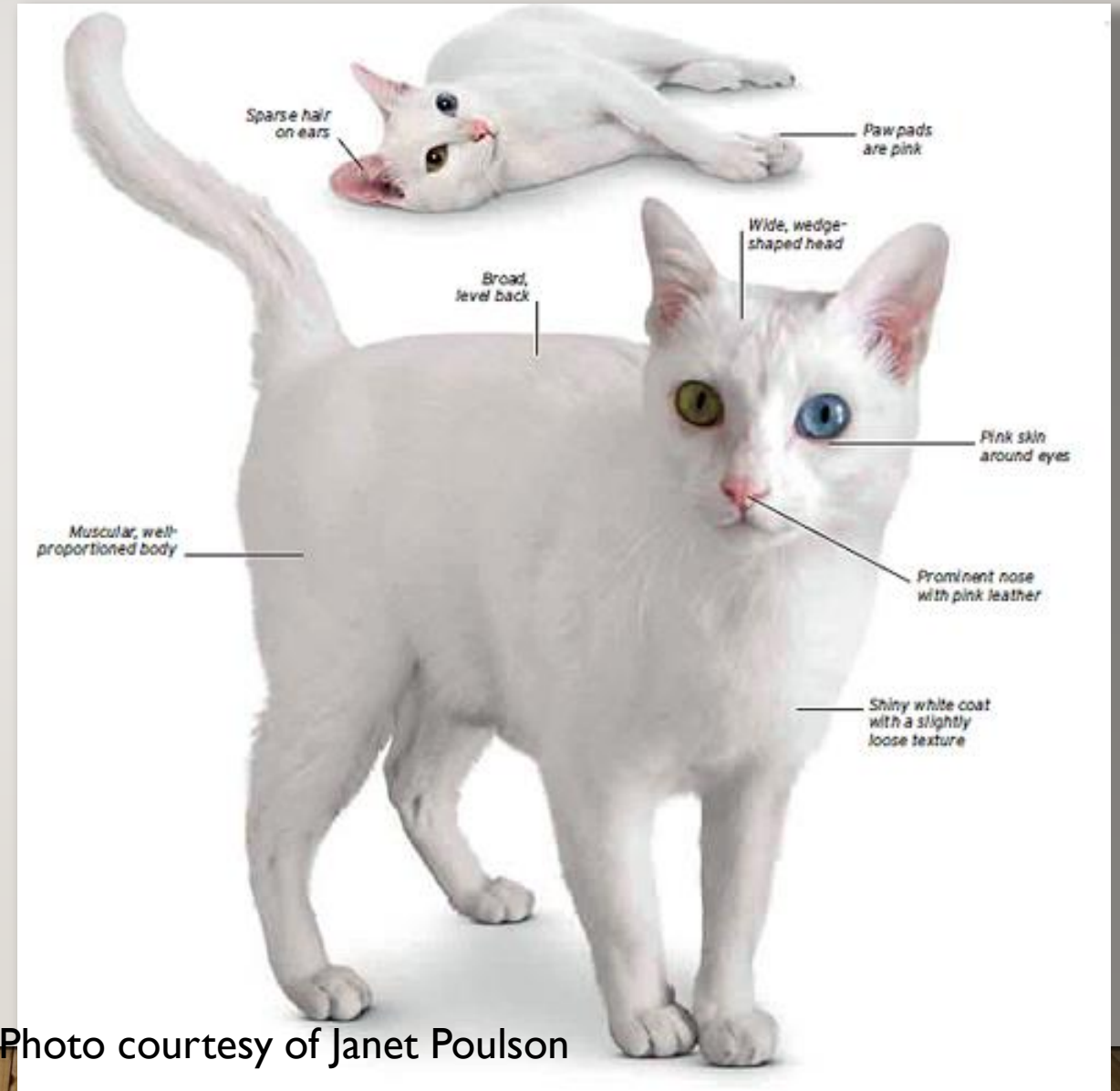


Photo courtesy of Janet Poulson

KHAO MANEE

Head: (20 Points)

Modified wedge, with medium width and moderate length. Viewed from the front, the face appears oval, with a chiseled look and high cheek bones set along the lower curve. Tip of nose and tips of ears form points of an equilateral triangle.



KHAO MANEE



HEAD	20 Points
------	-----------

Shape	5
-------	---

Profile	5
---------	---

Ears	5
------	---

Muzzle and Chin	5
-----------------	---

KHAO MANEE

Shape: (5 Points)

A few very nice examples.
Young female at lower right
is daughter of the male at
lower left and the female at
upper right.



KHAO MANEE

Profile: (5 Points)

Long, very slightly straight to convex forehead. Moderate, nearly straight profile, but with slight, straight, downhill slope from brow to just below the eyes. Nose may be slightly convex.



KHAO MANEE

Ears: (5 Points)

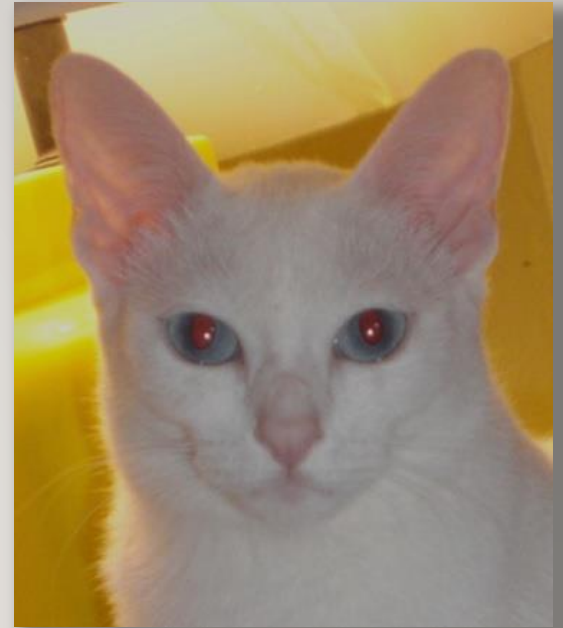
Slightly large, wide at the base, oval tips, somewhat longer than width at base. Ears should point toward 11 and 1 o'clock. Ears should be well separated from each other, a bit less than an ear base width apart. Allow for light furnishings.



KHAO MANEE

Examples of Nice Ears

Note the mosaic colored eye on the young male, upper left.



KHAO MANEE

Muzzle and Chin: (5 Points)

Medium in length and width. Muzzle break is moderate, with a rounded muzzle. Moderate chin, proportional to the nose.



KHAO MANEE

Body: (20 Points)

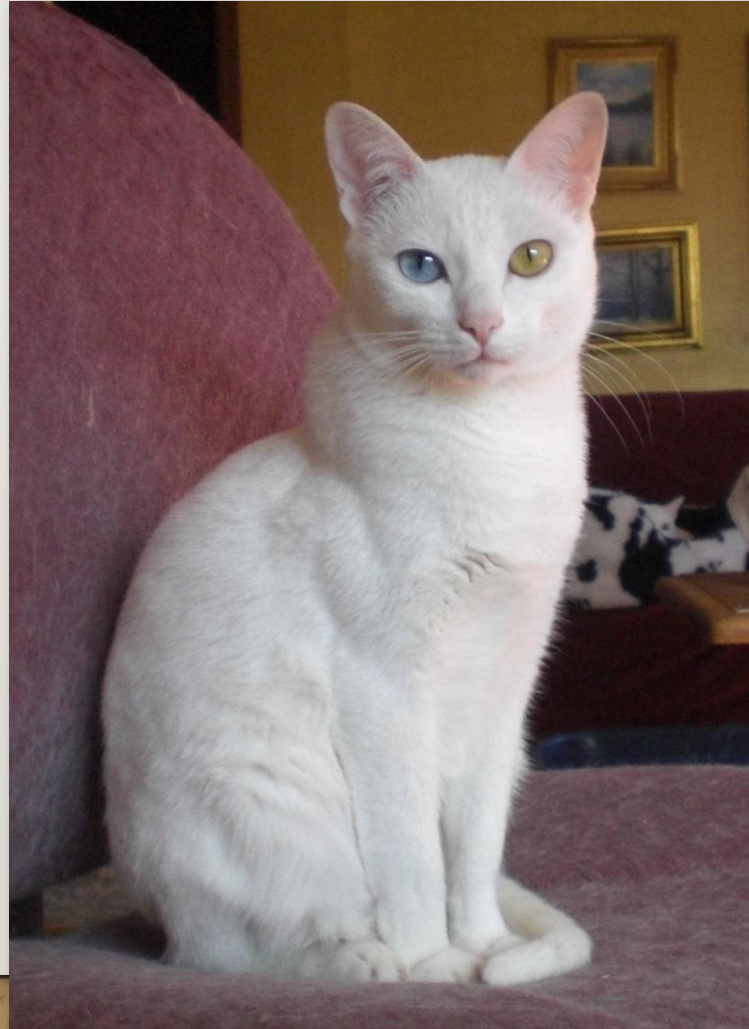
Medium torso. Very firm musculature, but cat should look agile and feel flexible and springy, not meaty or heavy. Males should have more muscle than females, but should not be cobby or thick-necked. Underbelly is mostly firm, level and parallel to the ground, but some loose skin on the underbelly is permissible.



KHAO MANEE

Body: Female vs. Male

The female tends to be narrower in the shoulders and wider at the rear, while the male is heavier at the shoulders and neck and narrower at the pelvis.



KHAO MANEE

Legs and Feet: (5 Points)

Tail: (5 Points)

Legs medium to slightly long, well-proportioned to body. Front legs slightly shorter than back legs. Boning medium to slightly refined in females and slightly robust in males.

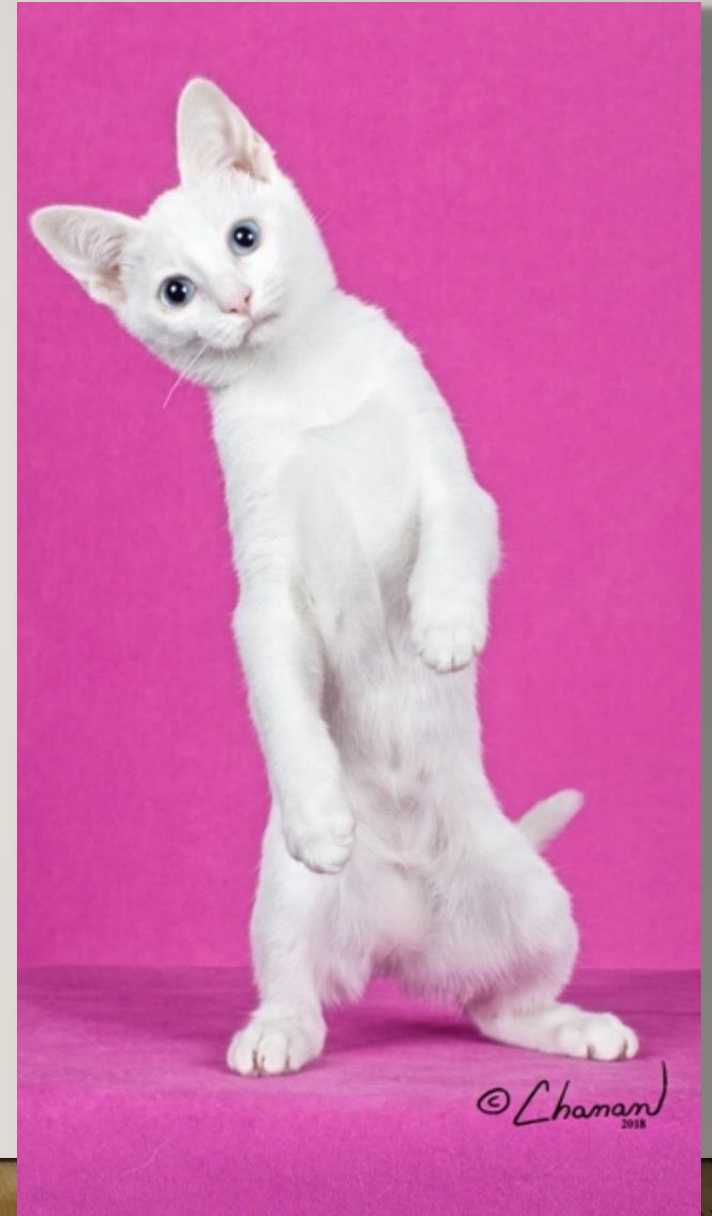


KHOA MANEE

Paws: Oval in shape, medium in size.

Toes: Five in front and four behind.

Tail: Medium. Proportional to the body, tapering gradually to the tip. Palpable kinks acceptable.



KHAO MANEE

Eyes: (15 Points)

Size: (5 Points) Slightly to moderately large and luminous.

Shape: (5 Points) An open almond shape, somewhat rounded when fully open or startled, but with a noticeable Asian slant when relaxed.

Placement: (5 Points) Set a bit more than an eye width apart.



KHAO MANEE

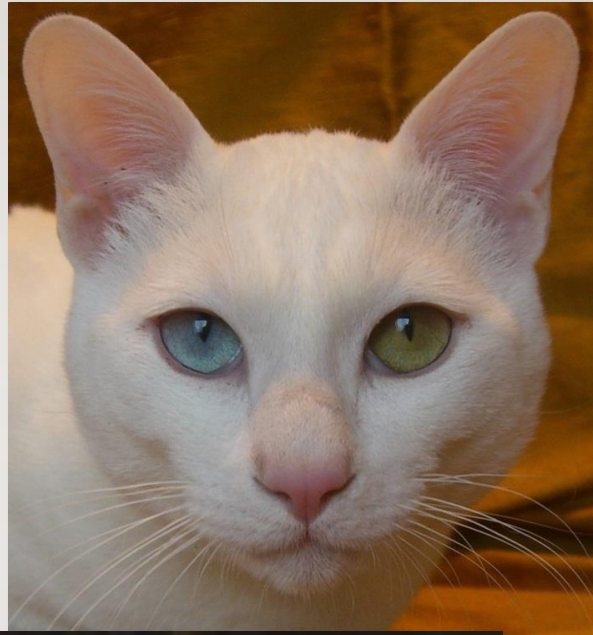
Eye Color: (10 points)

Brilliant, clear and vivid. Any shade of blue (including aqua), gold (including shades of brown, copper, amber, yellow, and hazel), or green.



Varieties of Eye Color

Eyes can be any color. When the genetic eye color is greenish, the blue eye tends to a more intense color than when the genetic eye color is more gold or amber. Blue eyes can vary from very pale silver-blue with an aqua genetic eye color to ice blue with a genetic gold color, to very intense bright blue with genetic green color.



Allowance for multiple colors or shades between eyes or within an eye.



KHAO MANEE



COAT: (15 Points)

Length: (5 Points)
Medium short.

Texture: (10 Points)
Fine and slightly open; smooth enough to reveal musculature, with a sparse to moderate undercoat. Not coarse or fluffy.

KHAO MANEE

Color of Coat: (10 Points)

Pure, glistening white. A headcap of color indicating the underlying genotype may persist until 18 months of age.



KHAO MANEE

Additional Color Requirements

Nose Leather and Lips: pink

Paw Pads: pink

Eye Color: Luminous, vibrant color, any shade of blue, gold, or green. Allowance for multiple colors or shades between eyes or within an eye.



KHAO MANEE

Temperament and Personality:

The personality of the Khao Manee, like that of all the native cats of Thailand, is communicative, though not necessarily noisy. They are active, playful, curious cats. They love to interact with people and hate to be left alone and ignored. The Khao Manee is highly intelligent. This is not a reserved, self-sufficient, independent breed. But it is a great breed for those who like cats that are all but human in their personalities and needs.



KHAO MANEE



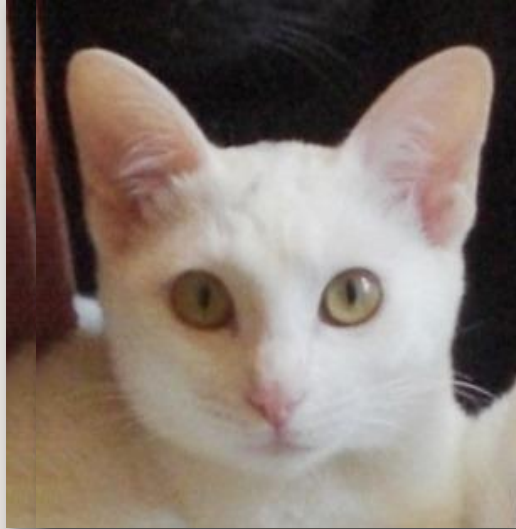
PENALIZE

- Fully round eyes with no indication of an Asian slant
- Small or dull looking eyes
- Short, blunt muzzle or long, pointed muzzle
- Straight profile
- Narrow upper head or narrow space between the ears
- Small ears
- Very large pointed ears
- Ears set significantly above or below 11 and 1 o'clock
- Overly cobby or overly foreign body.

Penalty Examples

Row 1

1. ears wide
2. head and ear-set narrow
3. slightly narrow head and ear-set



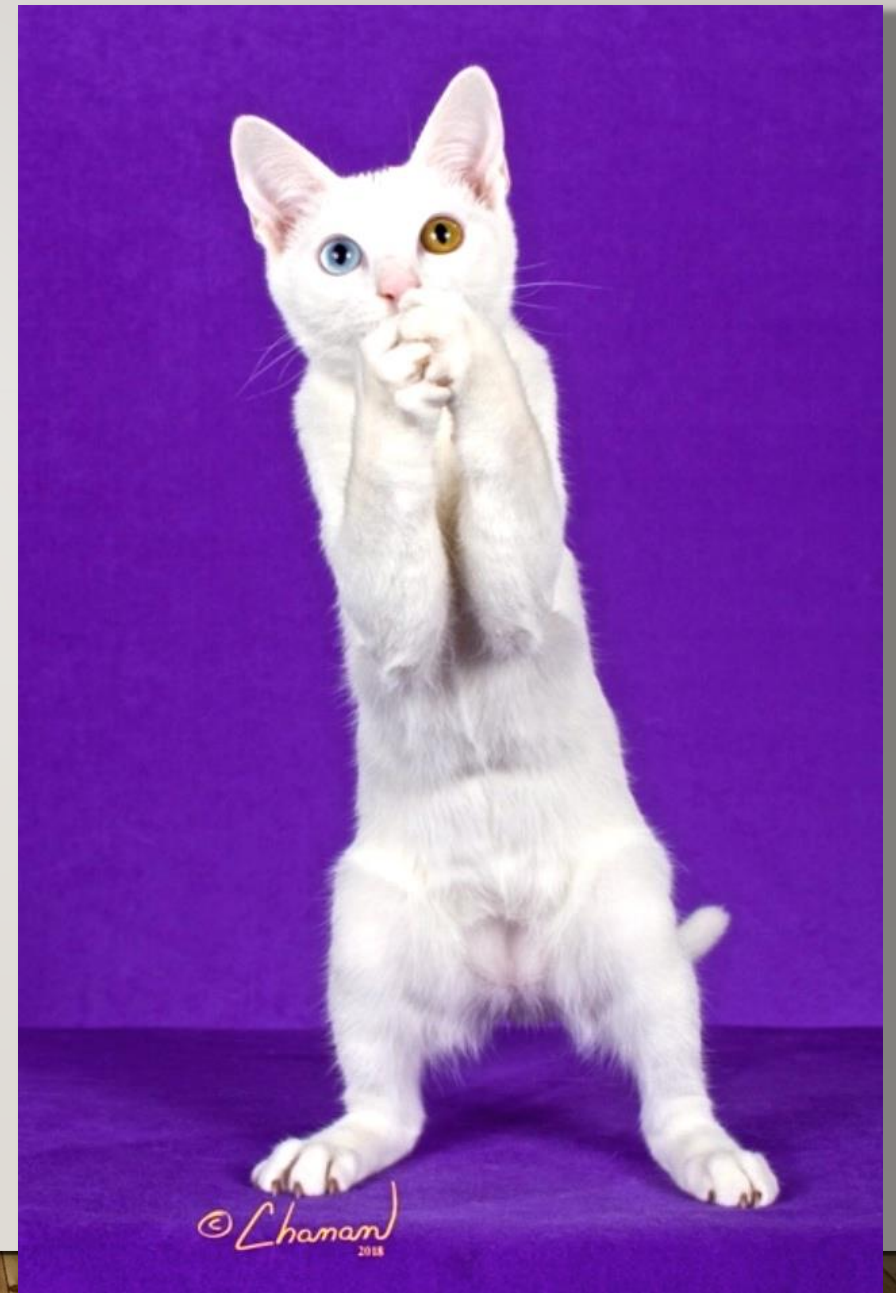
Row 2

1. eyes too big and round, face too short
2. ears too narrow at the base
3. wide, somewhat short muzzle



DISQUALIFY (DQ):

- Visible tail kink
- Incorrect number of toes
- Crossed eyes
- Any color but white



ALLOWABLE OUTCROSS BREEDS:

None

- A Khao Manee is, by definition, a white cat. Only white cats will be shown.

FOREIGN CAT REQUIREMENTS

Register white cats only from foreign registries, however non-white cats may appear in the pedigree. Foreign issued pedigrees, in particular those from Southeast Asia - including TCC (Thailand Cat Club) and TIMBA (The International Maew Boran Association), may include references to non-Khao Manee natural breeds of Thailand not currently recognized by CFA (e.g. Maew Boran, Suphalak, Wichienmaat, or Si Sawat).

PEDIGREE REQUIREMENTS

None. Registration slip from a WCC member or local Thailand registry or proof of import from Southeast Asia is sufficient.



KHAO MANEE

ANCIENT BREED

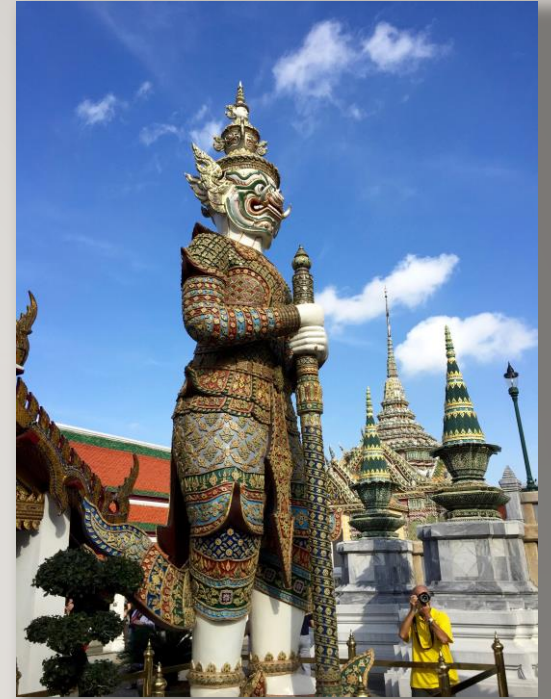
Described by Thai people at least 700 years ago and written into the *Tamra Maew*, the Cat-Book Poems.



The *Tamra Maew* was written between 1350 and 1767 and described 23 different cat breeds. Seventeen breeds, including the Khao Manee, were thought to bring good luck. The history of the Khao Manee began with a cat called the Khao-Plort. This was a solid white cat that had mercury colored eyes, most likely a gray-blue.

KHAO MANEE

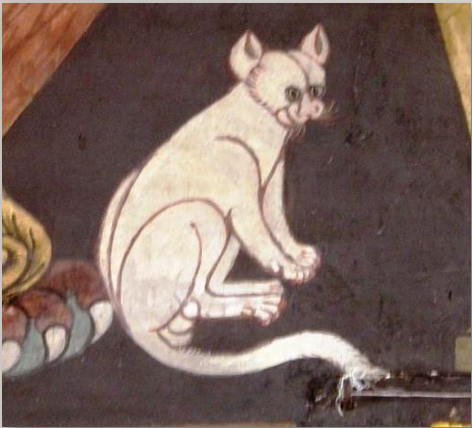
From the *Tamra Maew*, the Khao Plort was “...completely white, eyes of clear mercury, this cat, if in any house, brings long life and title, material wealth coming in with no decrease, will be entertained with all things in happiness.”



This translation is taken from Martin Clutterbuck's *Siamese Cats: Legends and Reality*, which is essential reading for anyone interested in the cats of Thailand.

KHAO MANEE

FAVORED BY ROYALTY



A Khao Manee mural painting in a temple, created during the reigns of Kings Rama I, II, and III (1782 to 1851 AD.)



Khao Manee, the "White Jewel," is a modern name, not appearing in any of the manuscripts, and likely coming from Rama V or his son, who is rumored to have bred these cats in the Palace.

KHAO MANEE

NATURAL BREED



In Thailand, the Maew Boran (ancient cats) developed naturally in the streets, villages, temples, and mountain sides of Thailand, and are described in the *Tamra Maew*.

Included with the Khao Manee are native Burmese, native Tonkinese, native Korat, Wichienmaat, Suphalak, and Konja.

KHAO MANEE



There's one in every family!

Maneki-neko cats aren't the only cats that bring good luck. The Thai version, known as Khao Manee Cat, is an ancient white breed with gold or blue eyes. It is reputed to bring good luck and prosperity to the owner.

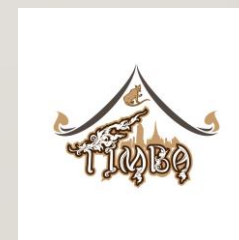
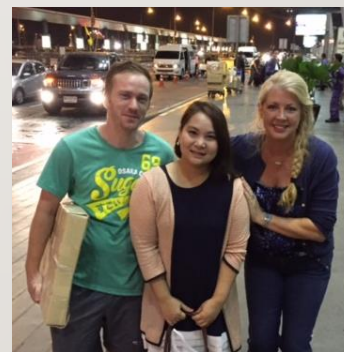
Not everyone will have an opportunity to pet a Khao Manee. However, you can go to Siam Square in Bangkok and pose with a Beckoning Giant Lucky Khao Manee Cat!



Thank you, KM breeders, for preserving these Thai cats!



- Special Thanks to Frédéric Goedert, Siih Aam
- Janet Poulsen, Odyssey
- Lori and Joe Haas, WhiteGem
- Michael & Lorraine Shelton, Featherland
- Mary Ellen Troup, Treves
- Nancy Shuman, Ringapurr
- Nikki Crandall-Seibert DVM, Rockinashi
- Robin and Brian Austin, Leotie
- Barb & Don Rice, Ash Knoll



- Special Thanks to TIMBA
- Nolan Betterley & Panarat Kamchat (Bew)
- Preecha Vadhana (Dtu)
- Kannika Yuennan (Aey)