

THE EXOTIC



© Chaman
2018

EXOTIC

Point Score

Head 30 pts

(including size and shape of eyes, ear shape and set)

Body Type 20 pts

(including shape, size, bone and length of tail)

Coat 10 pts

Balance 5 pts

Refinement 5 pts

Color 20 pts

Eye color 10 pts

General

The ideal **Exotic** should present an impression of a heavily boned, well balanced cat with a sweet expression and soft round lines. The large, round eyes set wide apart in a large round head contribute to the overall look and expression.

The **thick, plush** coat softens the lines of the cat and accentuates the roundness in appearance.



**Visualize a series of interconnected geometric circles.
The ideal Exotic should have small rounded tipped ears,
round head (top and bottom), round eye shape with no bias
angles slanting up, and a thick round body. They should meet
the Persian standard in every way except for the length of
coat.**



- **General – Exotic**

- The **thick, plush** coat softens the lines of the cat and accentuates the roundness in appearance.



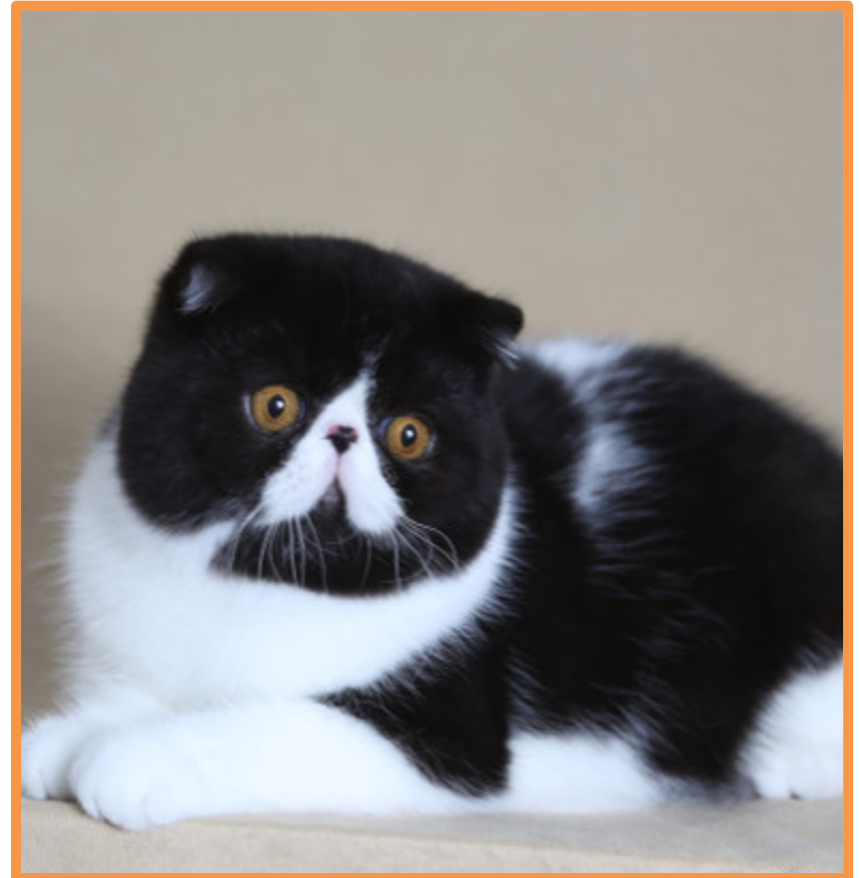
Head



- Round and massive.
- Great breadth of skull.
- Round face.
- Round underlying bone structure.
- Set on a short thick neck.

Nose

- Short, snub and broad.
- Break centered between the eyes.



Cheeks

- Full. Muzzle not overly pronounced, smoothing nicely into the cheeks.



Jaws

- Broad and powerful.

Chin

- Full, well developed, and firmly rounded.
- Reflecting a proper bite.



Ears

- Small, round tipped, tilted forward.
- Not unduly open at the base.
- Set far apart, and low on the head.
- Fitting into (without distorting) the rounded contour of the head.

Ears

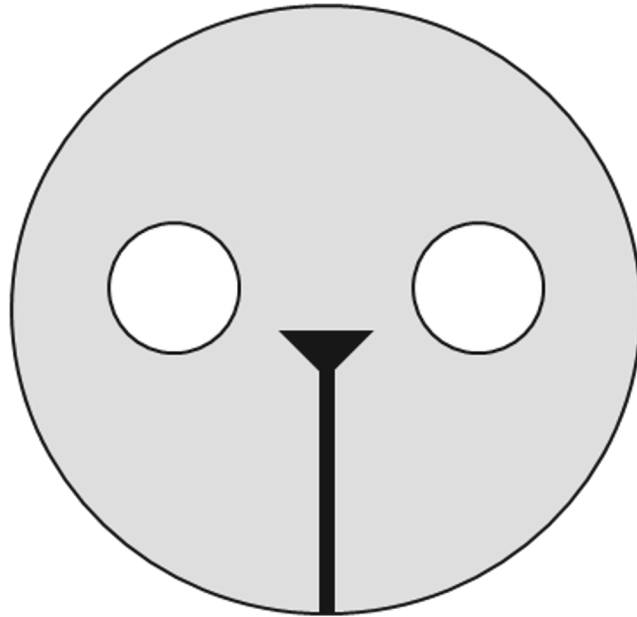


- **When the Persian/Exotic head is perfectly in balance, the head is completely round and equal. The “break” is centered between the eyes. There should be as much space from the break to the top of the head as there is from the break to the bottom of the chin.**
- **Top head is as broad as the mouth is wide, showing same distance at the top as at the bottom. The line of mouth extends as far as the corner of the ears.**
- **Head is perfectly round.**

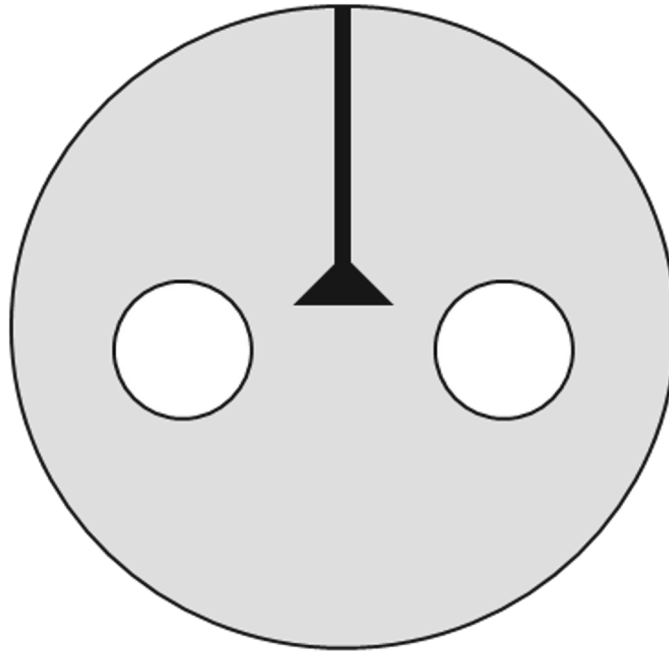
Balance and Refinement



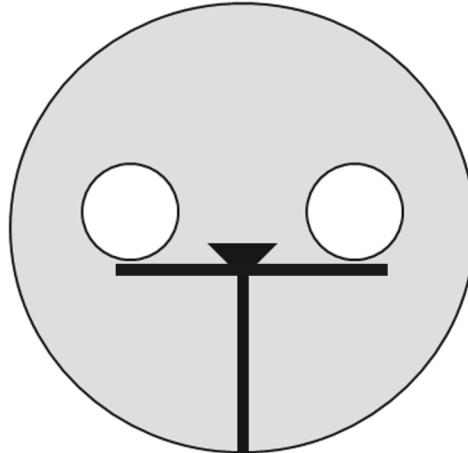
To see if a Persian's or Exotic's face is straight, look at them directly in the face:
Visualize an imaginary line from the bottom of the chin to the bottom of the nose leather.



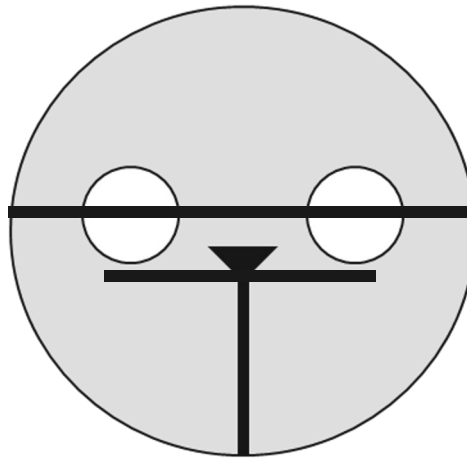
Many breeders believe the best way to tell if a Persian is crooked is to look down on the face from the top/back of the head.



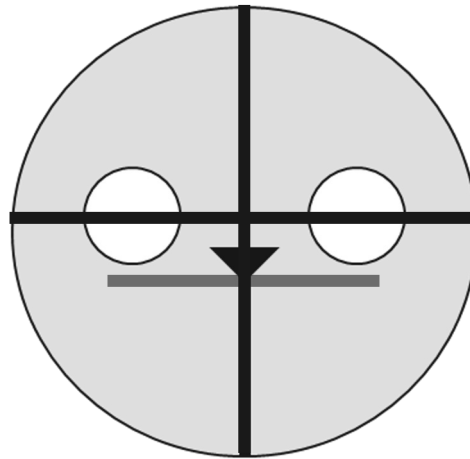
Next, visualize a perpendicular line intersecting the previous line at the bottom of the nose leather. Ideally, this line should rest on the bottom of the eyelids.



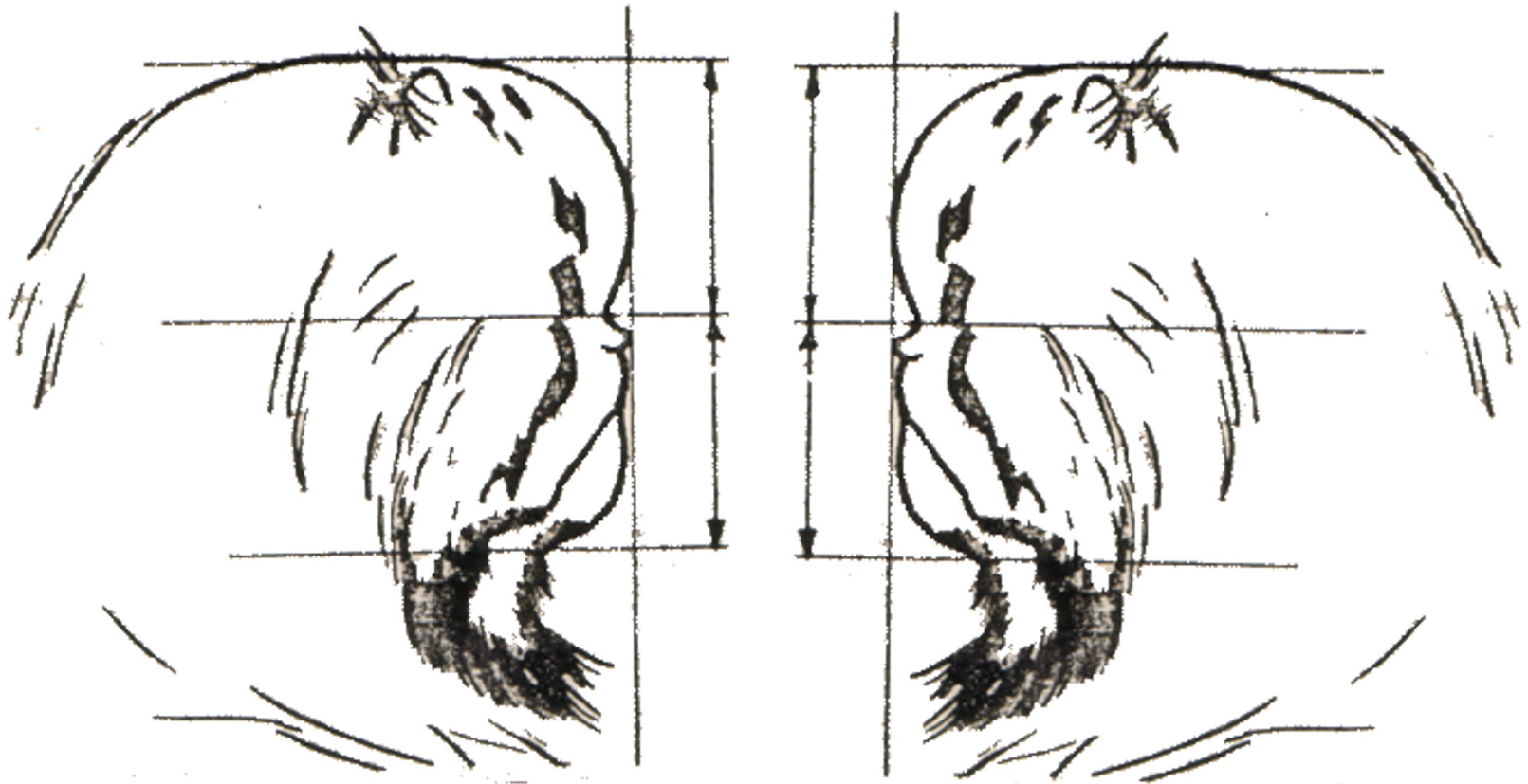
Now, a straight line centered across the eye apertures and through the “break” should form the center of balance between the top of the head and the bottom of the chin



The ideal Exotic head is seen as being perfectly quartered. Four equal parts, going in-between the eyes and down the center of the nose.





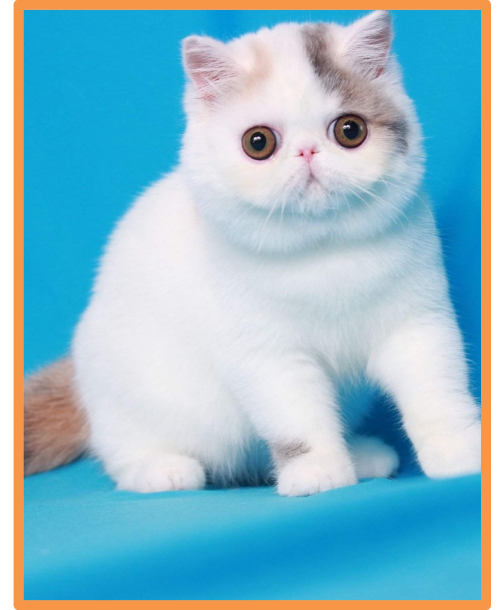


Same as a Persian, the profile from the top of the nose to the top of the head is the same distance as from the top of the nose to the chin bottom. Forehead, nose and chin are in straight line.

Profile



Eyes



- Brilliant in color.
- Large, round and full.
- Set level and far apart.
- Gives a sweet expression to the face.



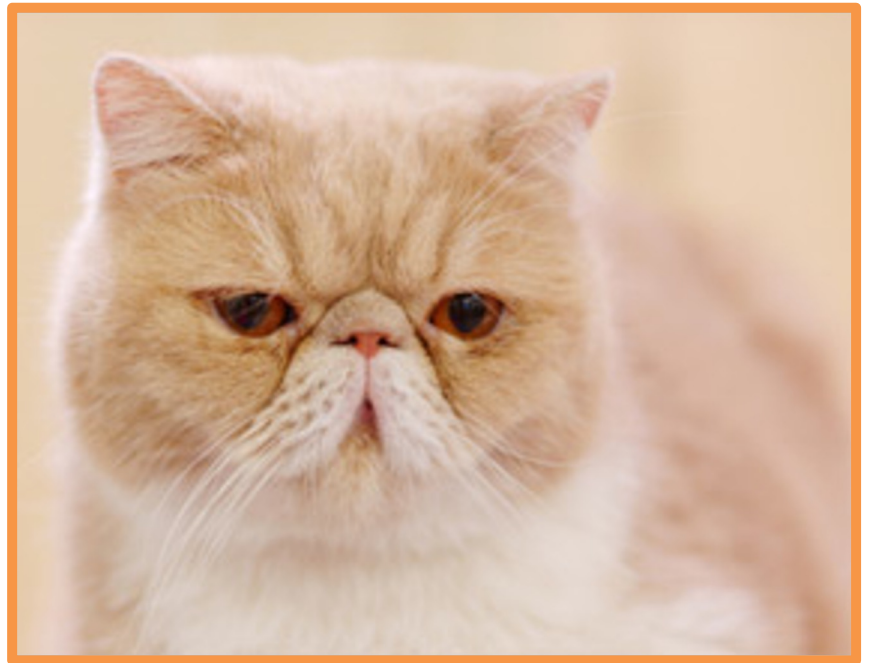
Correct eye aperture - completely round.
No corners.

Incorrect eye aperture:

- Eyes set on a bias.
- Dew Drop eye shape.



Eyes set on a bias with break line too high giving a coarse angular look.

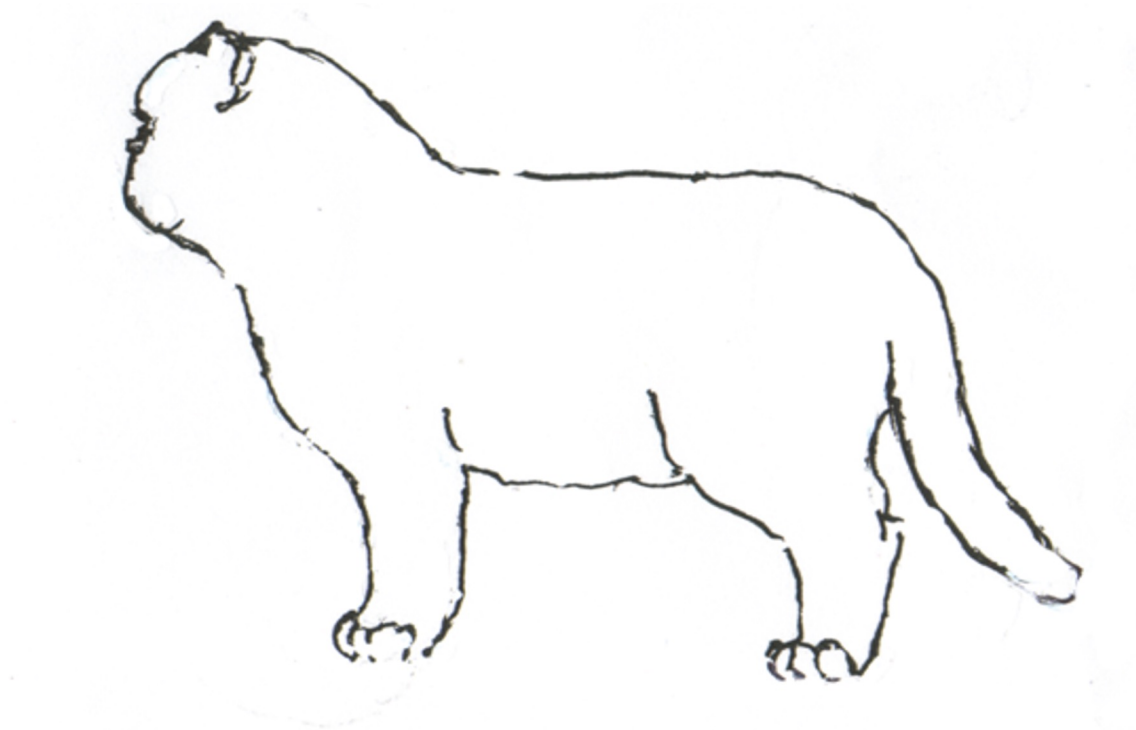


Body

- Cobby type, low on the legs.
- Broad & deep through the chest.
- Equally massive across the shoulders & rump.
- Well rounded midsection and level back.
- Good muscle tone.
- No evidence of obesity.
- Large or medium in size.
- Quality the determining consideration rather than size.

Body

NOTE: Stepping back an appropriate distance to view the cat while standing to the side allows for better evaluation of the body, back, tail length and carriage.



Well rounded midsection and level back

Legs

- Short, thick and strong.
- Forelegs straight.
- Hind legs are straight when viewed from behind.



Paws

- Large round and firm.
- Toes carried close.
- Five in front, and four behind.



Tail

- Short, but in proportion to body length.
- *Carried without a curve and at an angle lower than the back.*

NOTE: The Persian and the Exotic are the only two breeds that describe how the tail should be carried. Also, please note that a tail can be too short.

Tails carried over the back are referred to as “Squirrel Tails.”

This is a structural fault, not only in Persians and Exotics but in all breeds.



Coat

- Dense, plush.
- Soft and full of life.
- Standing out from the body due to a rich thick undercoat.
- Medium in length.
- Acceptable length depends on proper undercoat.

Coat Colors

Refer to the current breed standard for acceptable colors.

It should be noted that a calico coat MAY have tabby markings in the red areas. The black area should be clear black, with no tabby pattern showing.

If you are judging a cat that you feel might be a color other than that in the judges book, call for the owner and ask the registered color of the cat. If you feel it is not that color, ask them what color the parents are. (You cannot have a brown patched tabby and white if one of the parents is not an agouti tabby. You cannot have a blue silver or a blue silver tabby if one of the parents is not a silver/smoke.)

Breed Standard Change 2020

As of May 1, 2020 the Exotic is shown in DIVISIONS:

- Solid Color Division
- Silver and Golden Division
- Smoke and Shaded Division
- Tabby Division
- Parti Color Division
- Calico and Bi Color Division
- Pointed Division

Disqualify

- Locket or button.
- Kinked or abnormal tail.
- Any apparent weakness in the hind quarters.
- Any apparent deformity of the spine.
- Deformity of the skull resulting in an asymmetrical face and/or head.
- Crossed eyes.
- White toes and eye color other than blue in pointed pattern.
- Check under colors for other DQ's.



The End