

The American Bobtail

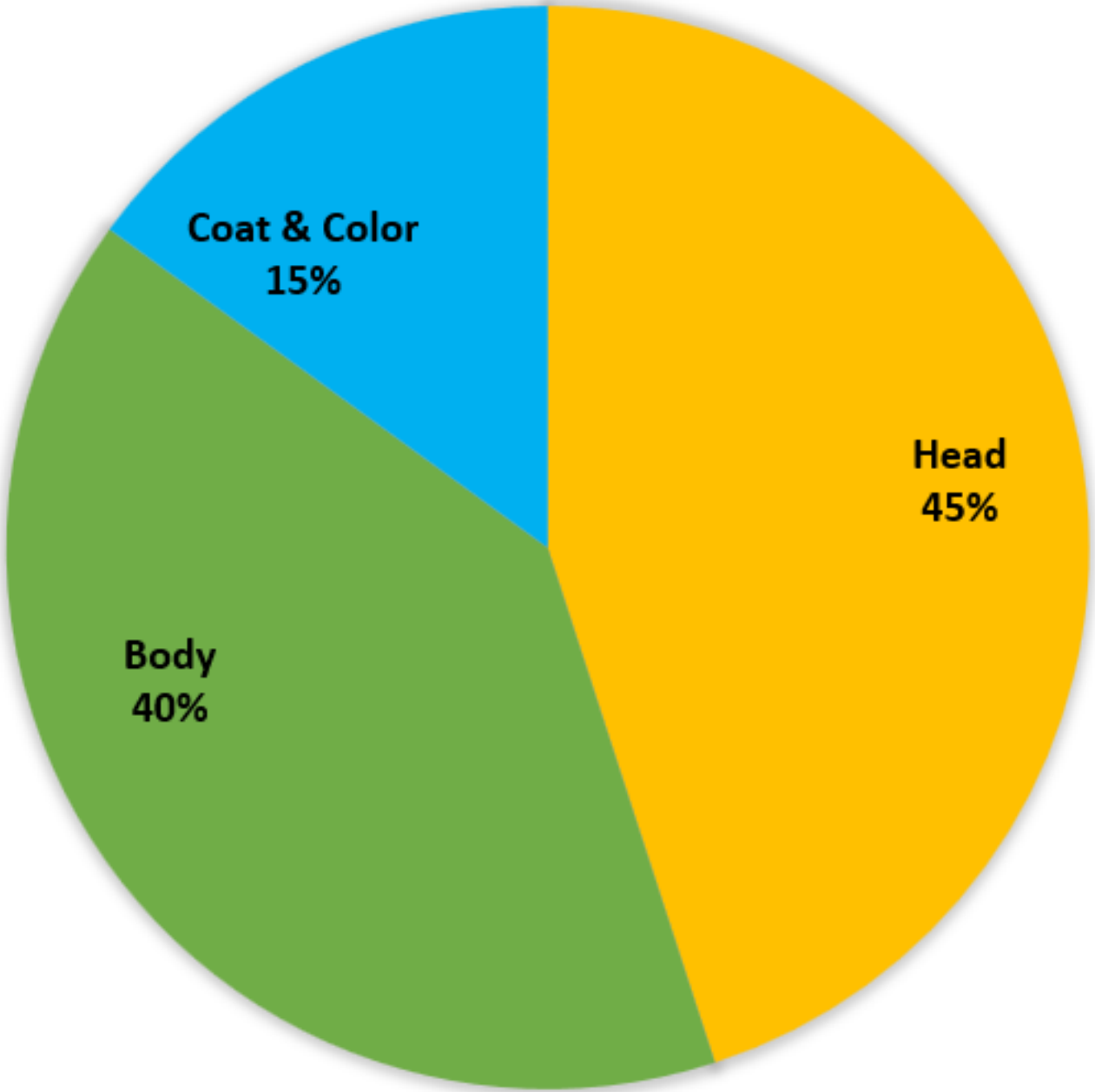




About the American Bobtail

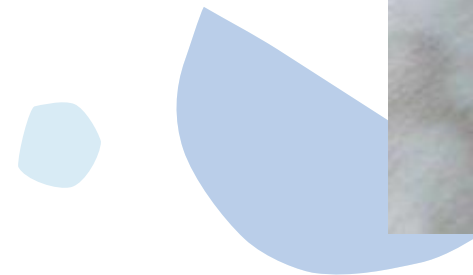
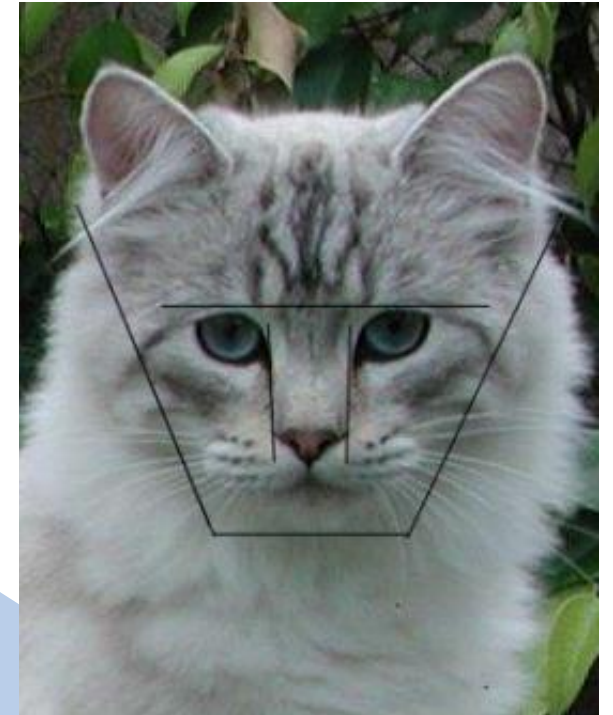
- Naturally occurring, medium to large bobtailed cat
- Well muscled, noticeably athletic
- Distinctive 'wild' appearance
- Unique 'hunting gaze'
- Intelligent and Alert

Points Breakdown



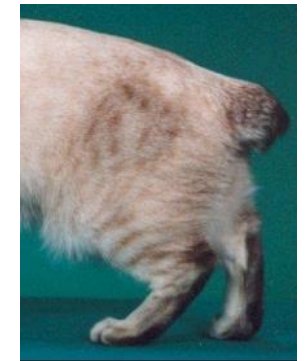
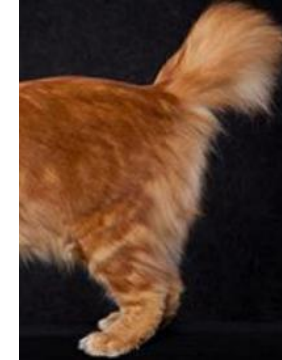
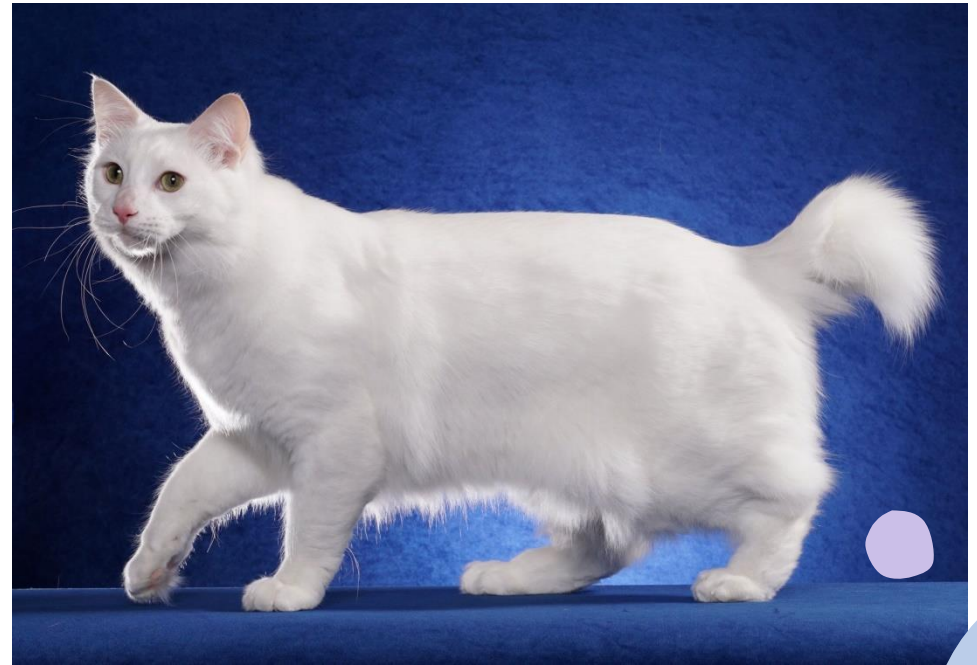
Head

- **Shape** – broad modified wedge without flat planes or doming
- **Brow** – distinctive, evidenced by slightly rounded forehead to eye ridge
- **Eyes** – large, almost almond in shape; deep set
- **Nose** – wide, being equally wide from inside corner eye through length of nose into a large nose leather
- **Muzzle/chin** – observable whisker break above well-defined broad medium length muzzle; fleshy whisker pads, strong chin and wide in line with nose
- **Ears** – medium, wide at base with rounded tips, wide set, upright with slight outward tilt, ear tipping and furnishings desirable



Body

- Moderately long and substantial with rectangular stance; chest broad and full; slightly higher in hips with prominent shoulder blades
- **Legs and Feet** – In proportion to body, good length and substantial boning
- **Tail** – short; flexible and expressive and may be straight, slightly curved, or slightly kinked/have bumps along the length of tail
- **Tail length** – Must be long enough to be clearly visible above the back when alert, not extend past a stretched hind hock in length
- **Neck** – Medium in length, may appear short due to musculature



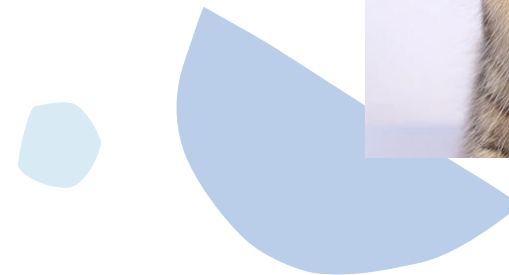
Coat - Shorthair

- **Length** – Medium, semi-dense, resilient with slight loft
- **Texture** – Non-matting, resilient with slight loft
- **Density** – Double coat: hard top coat and soft, downy undercoat
- Seasonal variations of coat should be recognized; coat may be softer in texture in dilute, lynx points, and silvers



Coat - Longhair

- **Length** – medium-long, slightly shaggy, tapering to slightly longer hair on ruff, britches, belly, and tail
- **Texture** – non-matting, resilient
- **Density** – Double coat, undercoat present, not extremely dense
- Seasonal variations of coat should be recognized; coat may be softer in texture in dilute, lynx points, and silvers



Color

- Any genetically possible color or combination allowed
- Preference given to colors and patterns that enhance natural wild appearance
- High rufusing desirable in tabbies, no penalty for lack thereof
- Body patterns highly desirable in lynx points and smokes
- Buttons and lockets allowable in any color and/or pattern
- All eye colors acceptable



Penalize/Disqualify

Penalize:

- Tail too long or too short
- Tail kinked or knotted out of shape
- Tail rigid, fragile or set low
- Straight tail without a fat pad
- Round eyes, weak chin, extremely short
- Muzzle or nose break. Cottony coat.

Disqualify:

- Total lack of tail or full-length tail
- Delicate bone structure
- Incorrect number of toes



Summary

- Naturally occurring, medium to large bobtailed cat
- Athletic animal, well muscled
- Distinctive 'wild' appearance with unique hunting gaze
- Comes in all genetically possible color or combination of colors

